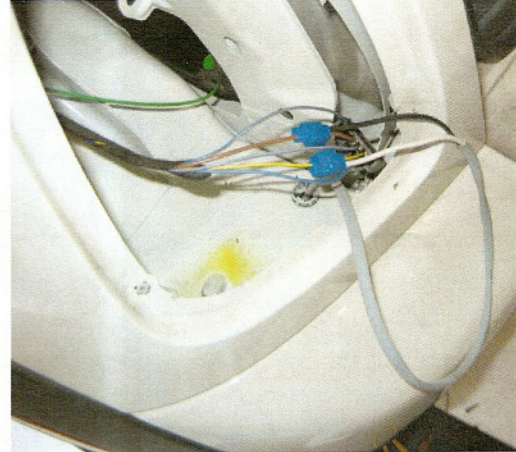
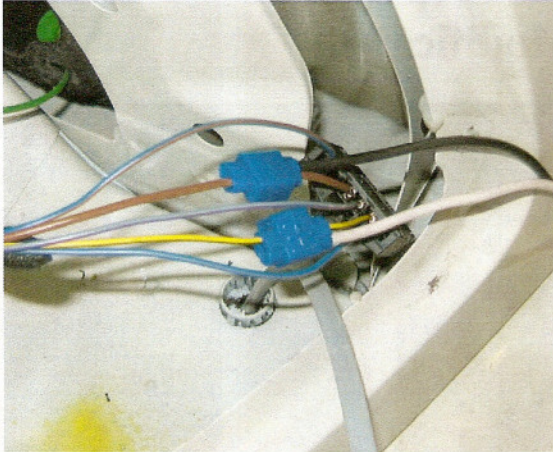


With the harness in the light compartment, connect the white wire to the yellow wire and the black wire to the brown wire with the quick splice connectors provided. This is pictured in the diagrams below.



After connecting both sides of the harness to each light connector, feed the OEM connector through the access hole for the rear fog light on each side and connect each one to the fog light. After both fog lights are connected, turn on the car and depress the brake pedal, to ensure that both lights come on. (as pictured to the right) If either light does not light, check the quick splice connectors to ensure that they are tight. If both lights are on, reinstall each tail light connector and retest the lights prior to reinstalling the light housing. With all lights working, turn off the car and reassemble the lights and reinstall the tail trim piece.



Your final assembly should look like the picture below.



Congratulations! – You have just made your MINI safer with the:

'ADD A BRAKE LIGHT' Kit

Our thanks to 'TURRBO' for letting us use his car for the installation and the photos for our instructions.