

Genuine MINI Accessories

Installation Instructions



Retrofit - Navigation portable

MINI One (R50)

MINI Cooper (R50)

MINI Convertible (R52)

MINI Cooper S (R53)

Retrofit not available for vehicles with SA 547 (Cockpit Chrono package) and SA 609 (Navigation system); retrofit kit is only available for vehicles with rev counter.

Retrofit kit No.	65 90 0 429 057	Retrofit kit - Navigation portable
	65 90 0 429 055	Retrofit kit - Navigation portable

Installation time

The installation time of approx. **0.5** hours may vary depending on the vehicle condition and equipment.

The vehicle must be updated to the latest I-level status by flashing before installing the retrofit. Different programming times are necessary depending on the production age of the vehicle and the work already performed on the vehicle so that no time requirements can be specified here. The installation time does not include the time required for programming/encoding which depends on the vehicle's age and equipment.

Important information

These installation instructions are primarily designed for use within the MINI dealership organisation and by authorised MINI service companies.

In any event, the target group for these installation instructions is specialist personnel trained on MINI cars with the appropriate specialist knowledge.

All work must be completed using the latest MINI repair manuals, circuit diagrams, servicing manuals and work instructions, in a rational order, using the prescribed tools (special tools) and observing current health and safety regulations.

In the event of installation or functional problems, limit troubleshooting to 0.5 hours for mechanical jobs and 1.0 hours for electrical jobs.

To avoid unnecessary work and costs, send a corresponding enquiry via the Aftersales Assistance Portal (ASAP) using the technical parts support application.

Please quote the following:

- Vehicle identification number
- Part number of retrofit kit
- Exact description of the problem
- Work already carried out

Do not archive the hard copy of these installation instructions since daily updates are made by ASAP!

All pictures show LHD cars; proceed accordingly on RHD cars.

Pictograms



Denotes instructions that draw your attention to special features.

- ◀ Denotes the end of the instruction or other text.

Installation information

Ensure that the cables and/or lines are not kinked or damaged as you install them in the car. Costs incurred as a result of incorrect installation will not be reimbursed by BMW AG.

Additional cables and/or lines that you install must be secured with cable ties.

If the specified PIN chambers are occupied, bridges, double crimps or twin-lead terminals must be used.

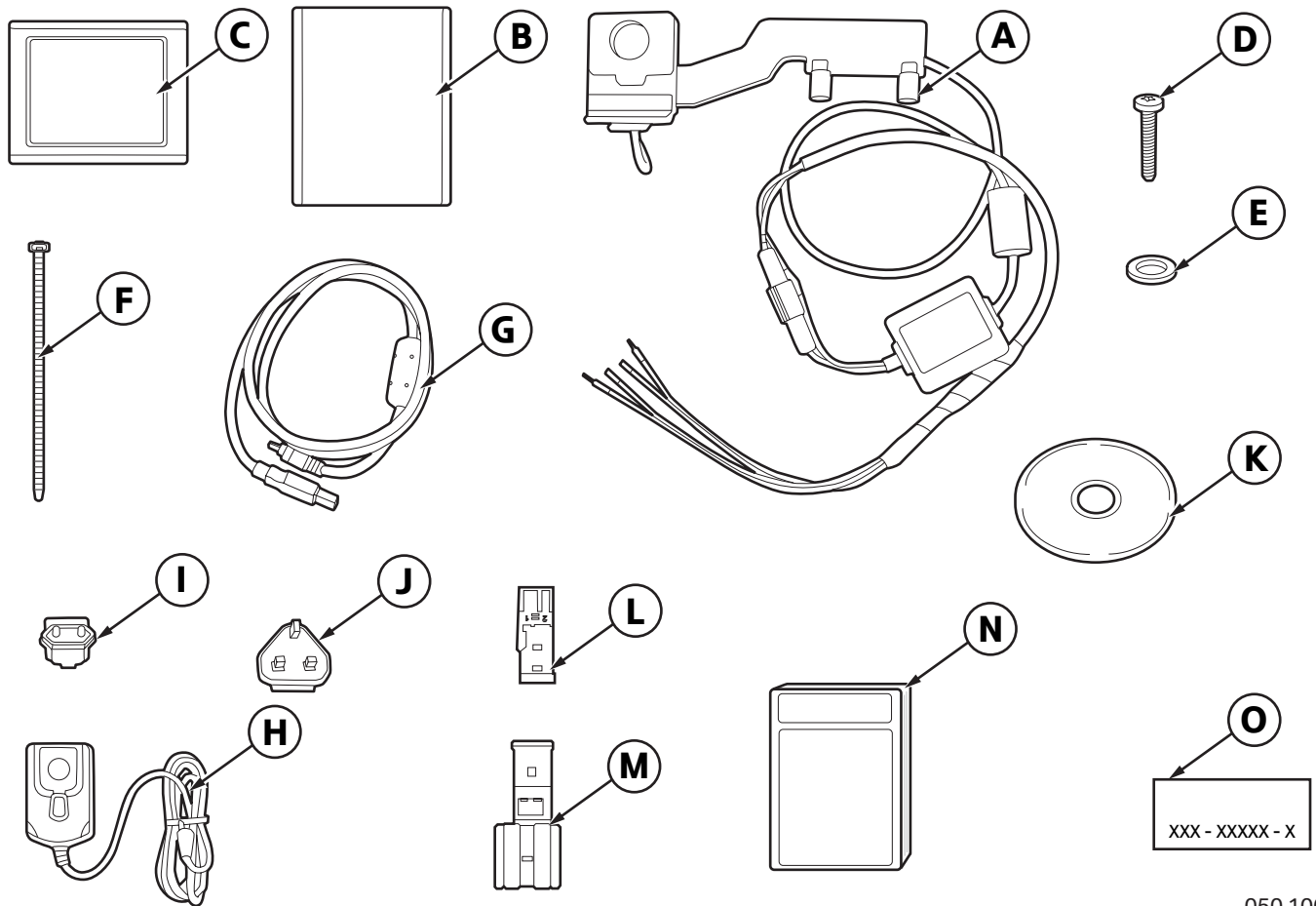
Special tools required

None

Contents

Section	Page
1. Parts Overview	4
2. Preparatory work	5
3. General layout and installation diagram	6
4. Overview of connections	7
5. Installing bracket for portable navigation unit	8
6. Finishing off and coding	9
7. Circuit diagram	10

1. Parts Overview



050 1000 V

Key

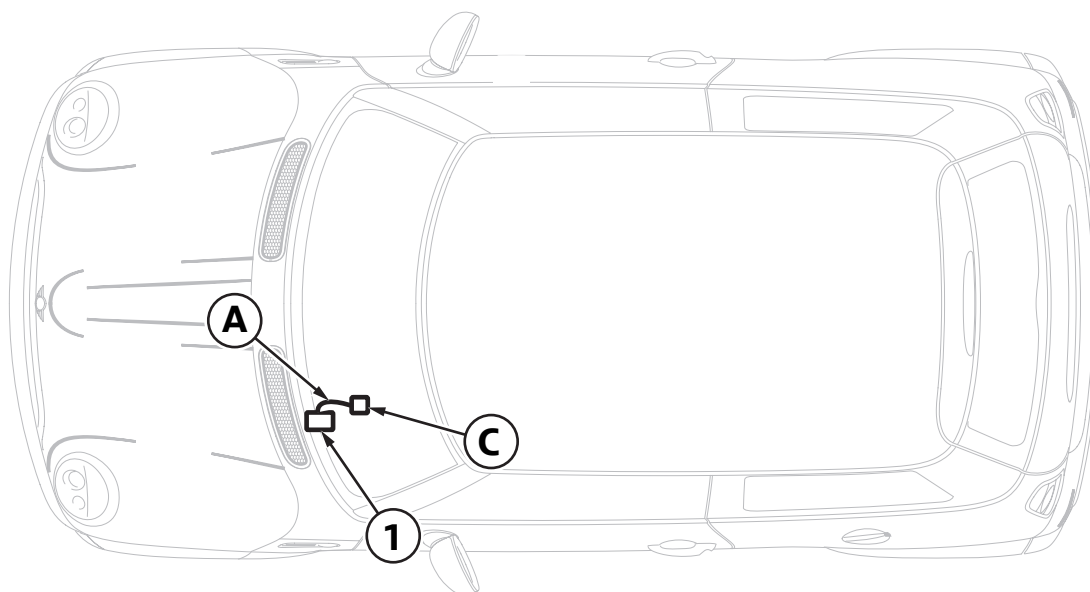
- A** Bracket with wiring harness
- B** Storage case
- C** Navigation unit
- D** Screw (2x)
- E** Washer (2x)
- F** Cable tie (5x)
- G** USB cable
- H** Charging cable

- I** ECE adapter
- J** UK adapter
- K** Operating instructions
- L** Pin housing
- M** Socket housing
- N** Quick start instructions
- O** Activation code

2. Preparatory work

	TIS No.
Perform quick test	—
Disconnect negative terminal of battery	12 00 ...
Remove the following components	
Instrument on steering column	62 11 400
If necessary: Headlight range adjustment switch	61 31 072
Storage area in dashboard trim	51 16 392
Steering column trim panel - top section	32 31 004
Steering column trim panel - bottom section	32 31 020

3. General layout and installation diagram



050 1004 V

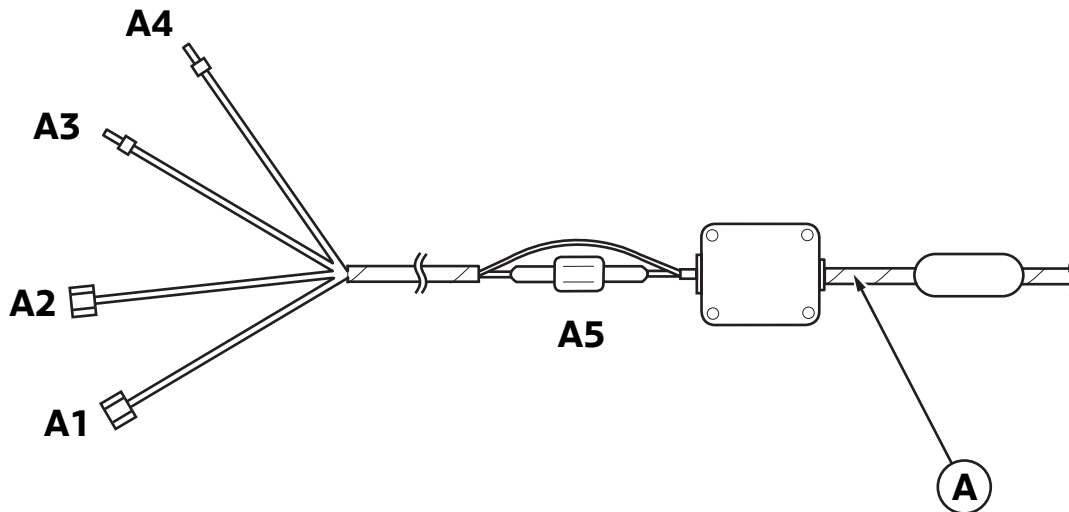
Key

A Bracket with wiring harness

C Navigation unit

1 Wiring loom connection

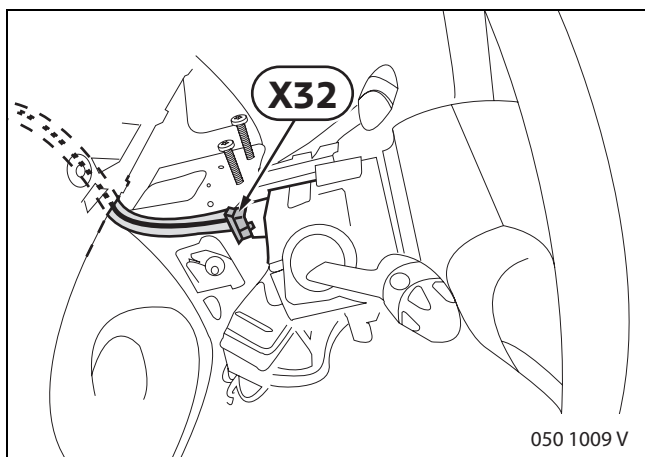
4. Overview of connections



050 1005 V

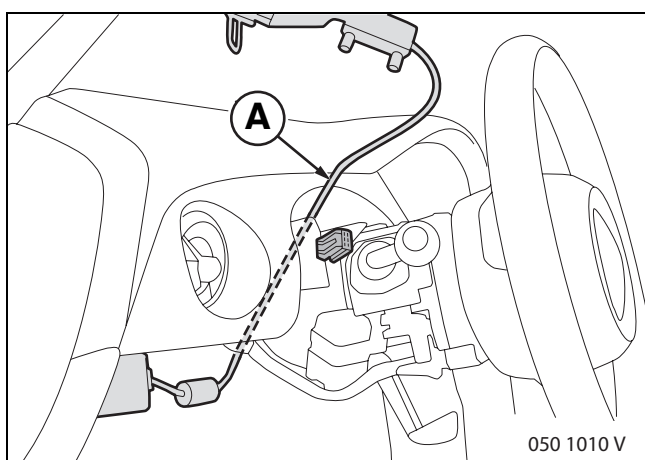
Item	Description	Signal	Cable colour/ cross section	Plug-in location in vehicle	Designation / connection location
A	Wiring harness	—	—	—	—
A1	Socket	Kl. 15	RT 0.50 mm ²	At connector X32 (12-pin, black), PIN 12	X32 PIN 12
A2	Socket	Kl. 31	SW 0.50 mm ²	At connector X32 (12-pin, black), PIN 7	X32 PIN 7
A3	PIN	Kl. 15	RT 0.50 mm ²	At pin housing L (2-pin), Pos. 1	Pos. 1
A4	PIN	Kl. 31	SW 0.50 mm ²	At pin housing L (2-pin), Pos. 2	Pos. 2
A5	Fuse	—	—	—	—

5. Installing bracket for portable navigation unit



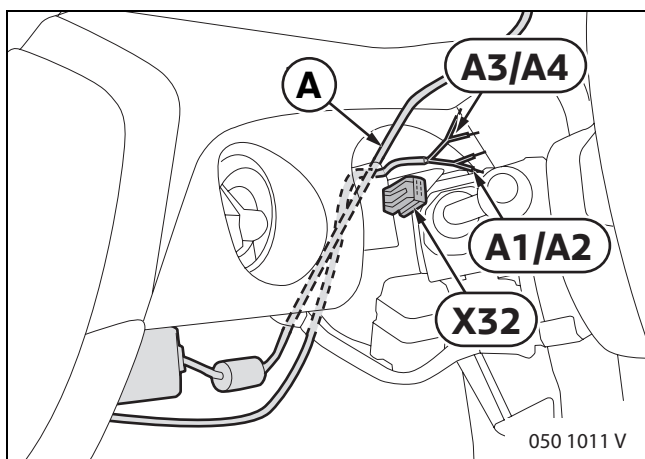
Unplug connector **X32**. Unplug PIN 7 and PIN 12. Then plug in at socket housing **M** as follows:

- PIN 7 at Pos. 2
- PIN 12 at Pos. 1



Run wiring loom **A** along the vehicle wiring harness on the steering column behind the dashboard.

Secure wiring loom **A** to the vehicle wiring harness with cable strap **F**.



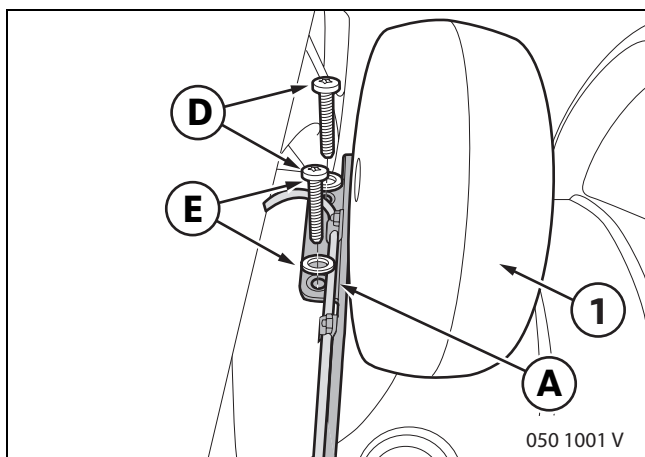
Now run wiring loom **A** back to connector **X32** and connect branches **A1** and **A2** as follows:

- Branch **A1** at PIN 12
- Branch **A2** at PIN 7

Connect branches **A3** and **A4** to pin housing **L** as follows:

- Branch **A3** at Pos. 1
- Branch **A4** at Pos. 2

Connect socket housing **M** and pin housing **L**.



Install upper section of steering column trim panel as described under TIS-RA 32 31 004.

Secure bracket **A** together with instrument (1), screws **D** and washers **E** on the upper section of the steering column trim panel.

6. Finishing off and coding

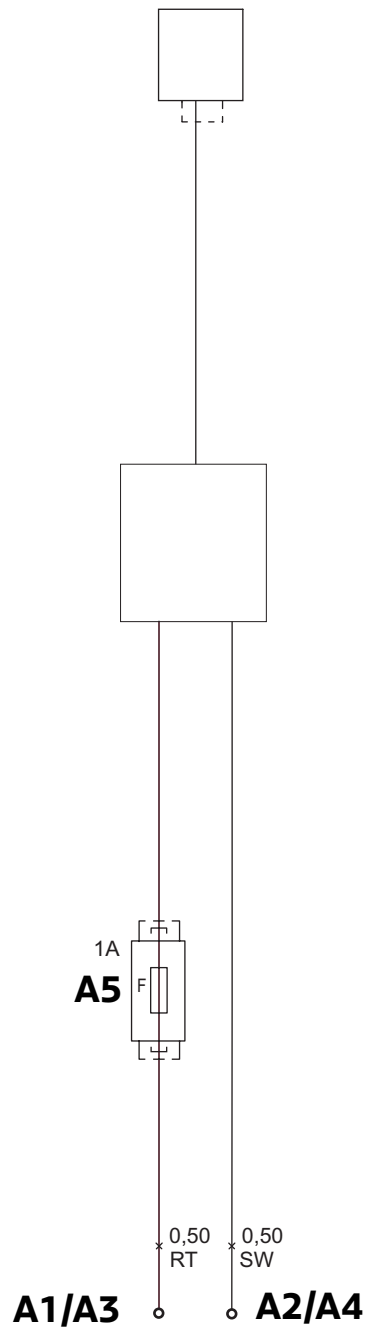
The retrofit system does not require encoding.

- Reconnect vehicle battery
- Perform quick test
- Reassemble vehicle in reverse order of removal.



Hand over all remaining parts of the parts kit to the customer. ◀

7. Circuit diagram



050 1012 V

7. Circuit diagram

Key

A1*	Socket
A2*	Socket
A3*	PIN
A4*	PIN
A5*	Fuse

All designations marked * only apply to these installation instructions or this circuit diagram

Cable colours

RT	Red
SW	Black