

Original MINI Accessories. Installation Instructions.



Aerodynamics package retrofit

MINI One (R56)

MINI Diesel (R56/R57)

MINI Cooper (R56/R57)

MINI Cooper S (R56/R57)

Retrofit kit No.: Part number see EPC

Installation time

The installation time for the individual retrofit kits is around:

Car	Painted	Primed	PDC	Times
Cooper One	X		X	22
Cooper One	X			21
Cooper One		X	X	25
Cooper One		X		24
Cooper D	X		X	22
Cooper D	X			21
Cooper D		X	X	25
Cooper D		X		24
Cooper S	X		X	19
Cooper S	X			18
Cooper S		X	X	25
Cooper S		X		24

This may vary depending on the condition of the car and the equipment in it.
In the case of the Aerodynamics package with black band in the car's colour, the 6 times must also be taken into account when fitting/removing the wheel arches.

For cars built after 08/10, a further 5 times must be factored in.

Important information

These installation instructions are primarily designed for use within the MINI dealership organisation and by authorised MINI service companies.

In any event the target group for these installation instructions is specialist personnel trained on MINI cars with the appropriate specialist knowledge.

All work must be completed using the latest MINI repair manuals, wiring diagrams, servicing manuals and work instructions, in a rational order, using the prescribed tools (special tools) and observing current health and safety regulations.

If you experience installation or function problems, limit troubleshooting to approx. 0.5 hours for mechanical or 1.0 hour for electrical work.

In order to reduce costs and avoid any additional expense, send a query immediately to the Technical Parts Support via the Aftersales Assistance Portal (ASAP).

Specify the following information:

- Chassis number,
- part number of the retrofit kit,
- a precise description of the problem,
- work steps already carried out.

Do not archive the hard copy of these installation instructions since daily updates are made via ASAP!

All pictures show LHD cars; proceed accordingly on RHD cars.

Pictograms



Denotes instructions that draw your attention to dangers.



Denotes instructions that draw your attention to special features.



Denotes the end of the instruction or other text.

Installation information

Some of the installation steps are shown only on the left-hand side of the car, proceed in the same way on the right-hand side of the car.

Keep the small parts (screws and expanding rivets) during removal. They will be required when installing the retrofit parts onto the car.

The fog light and the PDC sensors are adopted from the car and simply installed on the retrofit parts in accordance with **ISTA**.

On the MINI Cooper S built before 08/10, the rear fog lights are adopted from the car.

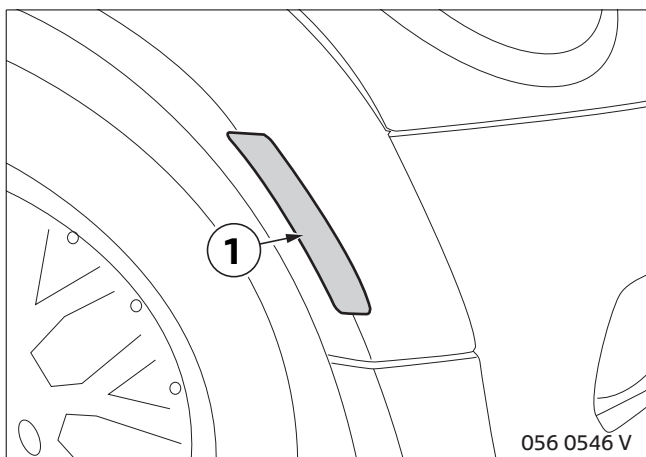
On cars built after 08/10, the retrofit kit includes the rear fog lights.

For the following cars, the rear fog lights and the required connecting parts are included as a separate parts kit: MINI Cooper, MINI Diesel and MINI One built before 08/10.

On the MINI Cooper S variants (without brake air channel), the air guides **V/W** are not installed and are not included in the parts kit.

On the MINI Cooper S variants (with brake air channel), the EBA **0129 2 155 612** should be observed.

After the installation work, the retrofit must be programmed/coded via the – **Conversions** – path.



Only for the MINI R56 black band in the car's colour:
at the customer's request, the supplied side marker (1)
(no function, no electrical connection) can be painted in
the car's colour.

Ordering instructions

Painted PDC sensors can be ordered via the EPC under MINI part number: **66 20 0 393 938**. When ordering, the colour code **must** be specified.

For cars built after 08/10, the relevant conversion package must also be ordered in addition to the retrofit kit (for further details see EPC).

For R57 cars, when installing the side skirt, the red clip **CB** must also be ordered under MINI part number: **51 71 7 127 742** (see EPC for further details).

List of special equipment

SA 507 PDC (Park Distance Control)

Special tools required

None

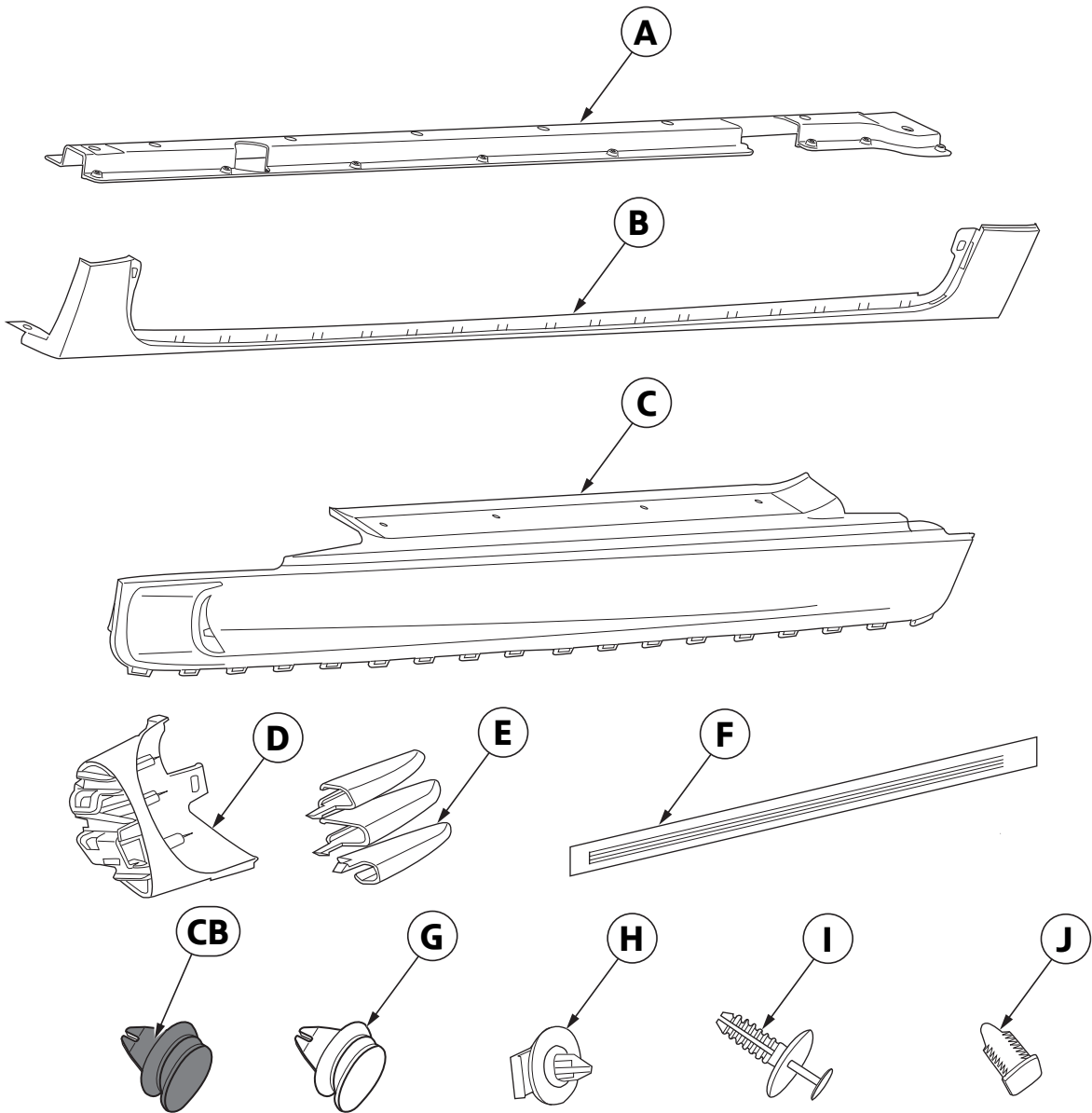
Painting instructions

PDC sensors adopted from the car must **not** be painted over. Components do **not** have to be primed before painting. Follow the MINI painting instructions for all painting work.
Coarse parts are **not** painted.

Table of contents

Section	Page
1. Side skirt trim parts list.	5
2. Front bumper parts list.	6
3. Rear bumper parts list.	8
4. Conversion package parts list for cars built after 08/10 (depending on design)	10
5. Preparatory work.	11
6. Complete the sill trim.	12
7. Completing the front bumper.	14
8. Completing the rear bumper.	17
9. Connection matrix for the R5x LCI Aerokit adapter wiring harness.	22
10. Concluding work and coding.	24

1. Side skirt trim parts list

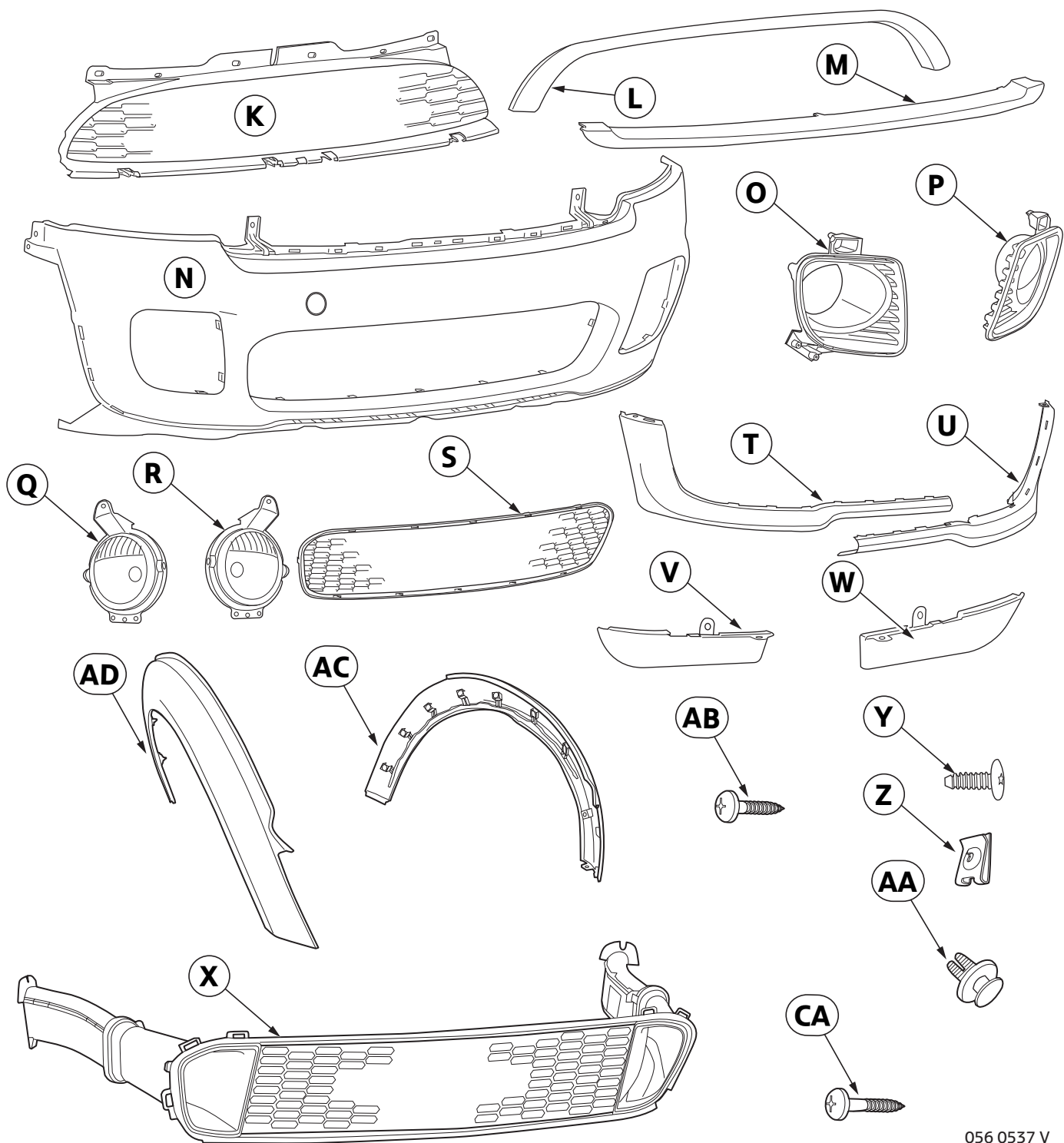


056 0543 V

Legend

- A** Fastening adapter (2 x)
- B** Lower section sill trim (2 x)
- C** Upper section sill trim (2 x)
- D** Side skirt air inlet support section (2 x)
- E** Side skirt air inlet insert (2 sets)
- F** Entrance finisher (2 x)
- G** Black clip (18 x)
- H** White clip (4 x)
- I** Expanding rivet (18 x)
- J** Black clip (8 x)
- CB** Red clip (16 x) **only for R57 part number 51 71 7 127 742, must be ordered separately**

2. Front bumper parts list

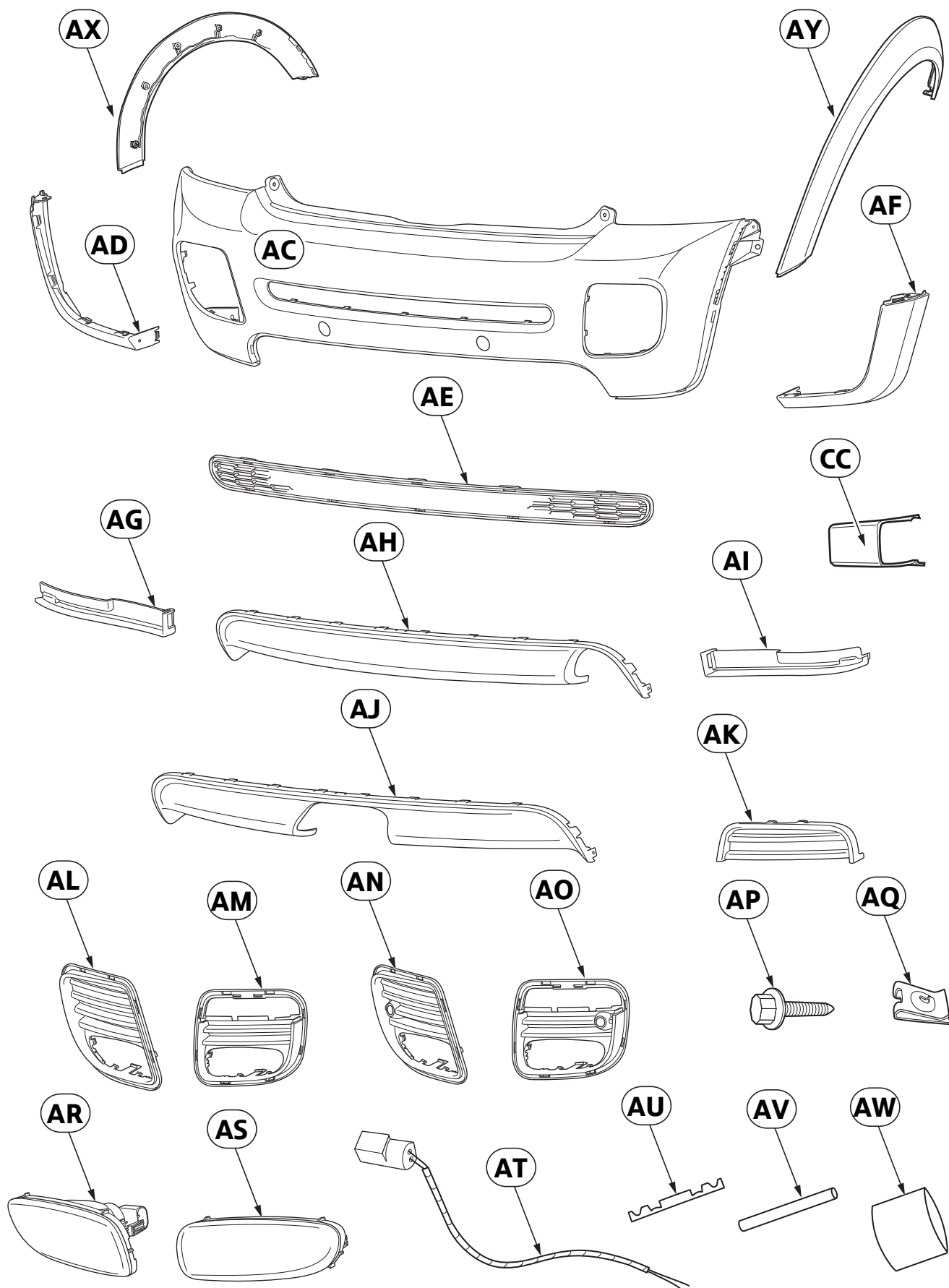


056 0537 V

2. Front bumper parts list

- | | | | |
|----------|---|-----------|--|
| K | Air inlet grille, top (1 x) | W | Left-hand air guide (1 x) not for Cooper S
(without brake air channel) |
| L | Air inlet finisher, top (1 x) | X | Brake air package for Cooper S |
| M | Air inlet finisher (1 x) | Y | Sheet metal screw (2 x) |
| N | Front bumper trim (1 x) | Z | Sheet metal nut (2 x) |
| O | Right-hand fog light finisher (1 x) | AA | Expanding rivet (4 x) |
| P | Left-hand fog light finisher (1 x) | AB | Screw (4 x) |
| Q | Right-hand fog light (1 x), not included in the
parts kit, adopted from the car | AC | Front left wheel arch
(with black band in car colour) |
| R | Left-hand fog light (1 x), not included in the
parts kit, adopted from the car | AD | Front right wheel arch
(with black band in car colour) |
| S | Bottom air inlet grille (1 x) not for Cooper S
(with brake air channel) | CA | Self-tapping screw (10 x) |
| T | Right-hand flare (1 x) | | |
| U | Left-hand flare (1 x) | | |
| V | Right-hand air guide (1 x) not for Cooper S
(without brake air channel) | | |

3. Rear bumper parts list



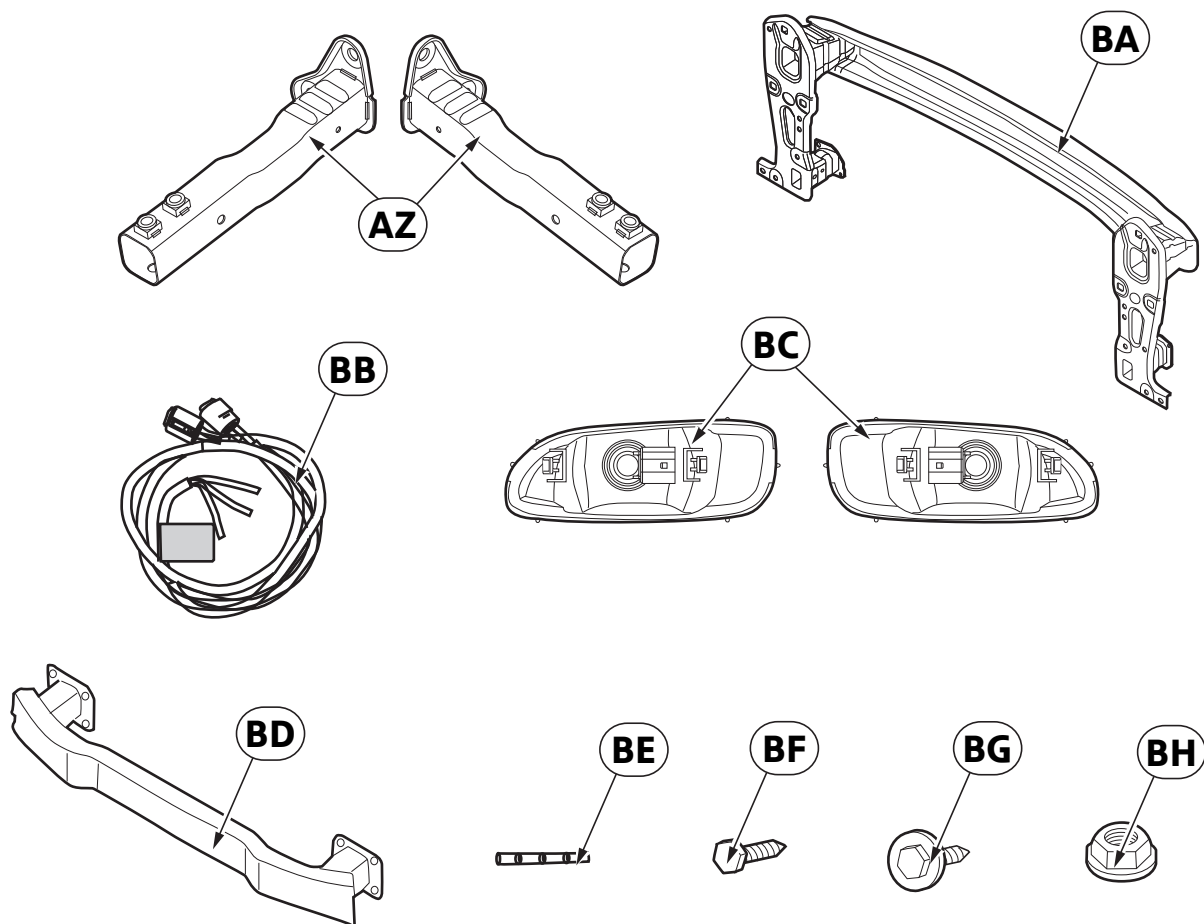
056 0545 V

3. Rear bumper parts list

Legend

- AC** Rear bumper trim (1 x)
- AD** Rear left flare (1 x)
- AE** Centre air outlet grille (1 x)
- AF** Rear right flare (1 x)
- AG** Left bulkhead (1 x)
- AH** Bumper finisher (1 x) **not for Cooper S**
- AI** Right bulkhead (1 x)
- AJ** Bumper finisher (1 x) **only for Cooper S**
- AK** Towing eyelet finisher (1 x)
- AL** Left-hand air outlet grille (1 x)
- AM** Right-hand air outlet grille (1 x)
- AN** Left-hand air outlet grille with PDC (1 x)
- AO** Right-hand air outlet grille with PDC (1 x)
- AP** Sheet metal screw with washer (2 x)
- AQ** Sheet metal nut (2 x)
- AR** Left-hand rear fog light (1 x) **not on Cooper S**
- AS** Right-hand rear fog light (1 x) **not on Cooper S**
- AT** Adapter wiring harness (1 x) **not on Cooper S**
- AU** Butt-joint connector (2 x) **not on Cooper S**
- AV** Shrink hose (2 x) **not on Cooper S**
- AW** Shrink hose (1 x) **not on Cooper S**
- AX** Rear left wheel arch (with black band in car colour)
- AY** Rear right wheel arch (with black band in car colour)
- CC** Clip (10 x)

4. Conversion package parts list for cars built after 08/10 (depending on design)



056 0529 V

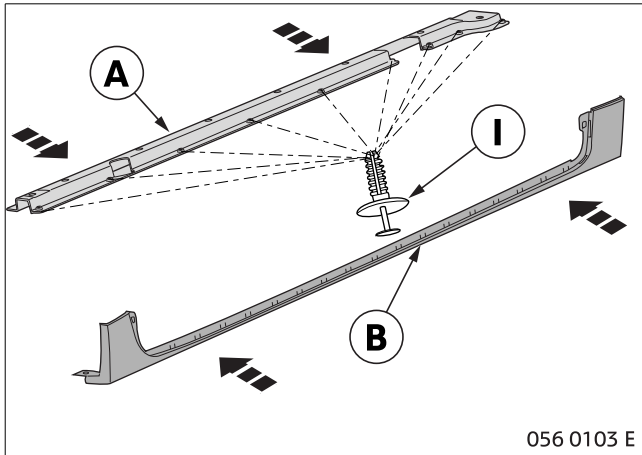
Legend

- AZ** Left/right bumper support mount (2 x)
- BA** Front bumper support
- BB** Wiring harness
- BC** Left/right reversing light (2 x)
- BD** Rear bumper support
- BE** Shrink connector (4 x)
- BF** Hexagon screw (4 x)
- BG** Hexagon screw with flange (4 x)
- BH** Hexagon nut with washer (6 x)

5. Preparatory work

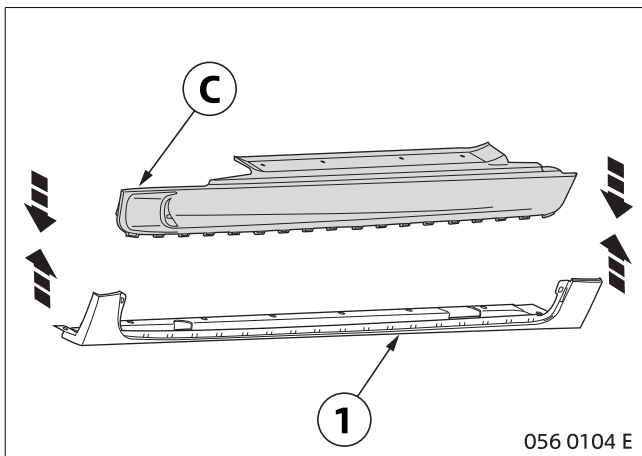
	ISTA No.
The following components must be removed first of all	---
Remove the side skirt trim	
Remove the front bumper	51 11 156
Remove the chrome strip for the air inlet grille	51 13 003
Remove the rear bumper	51 12 156
Remove and attach the finisher on the front right and left wheel arch (black band in car colour only)	51 13 102
Remove and attach the finisher on the rear right and left wheel arch (black band in car colour only)	51 13 105
For cars built after 08/10, the following must also be removed	
Front bumper support	51 11 050
Front bumper support mount	51 11 050
Rear bumper support (only R55 ECE ONE/ COOPER/ COOPER D)	51 12 050

6. Complete the sill trim

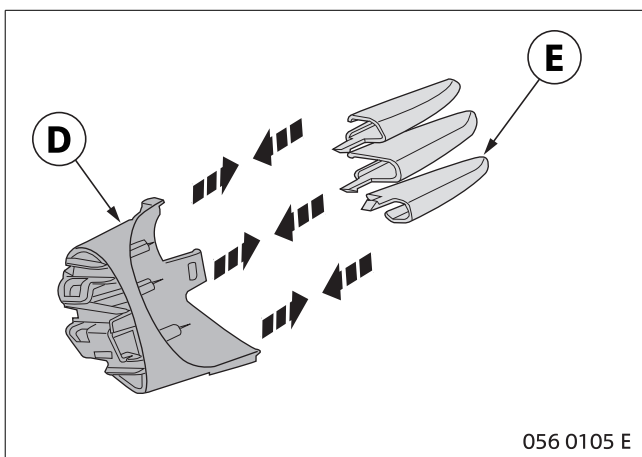


Place the fastening adapter **A** on lower section sill trim **B**.

Place expanding rivet **I** in the holes provided and lock into position.



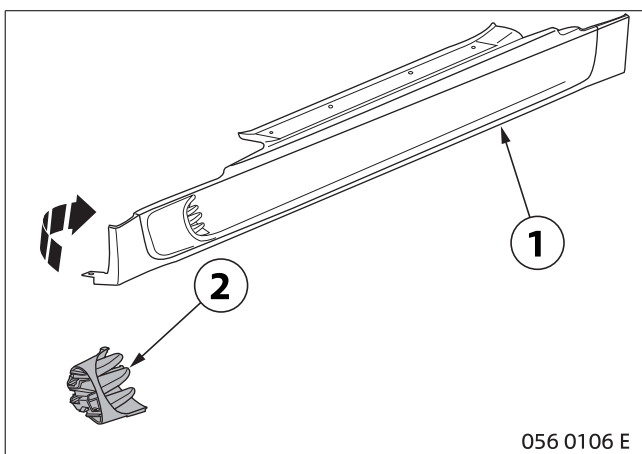
Place upper section sill trim **C** on the two previously-linked components (1) and allow them to engage.



Plug sill air inlet inserts **E** into sill air inlet support section **D**.

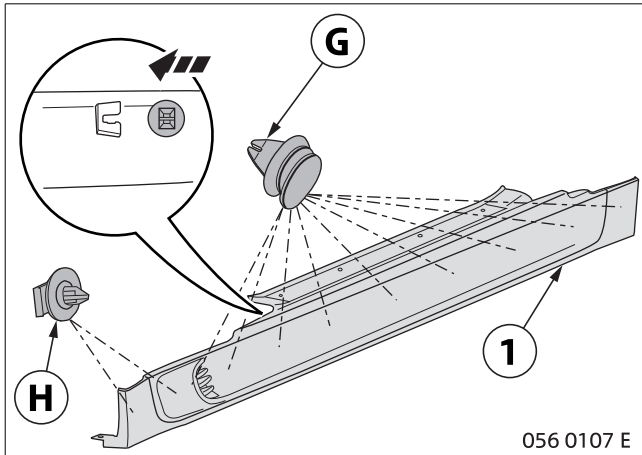
Inserts **E** are numbered and are inserted as follows:

- | | |
|------------------|-------------------|
| L1 – top left | R1 – top right |
| L2 – centre left | R2 – centre right |
| L3 – bottom left | R3 – bottom right |

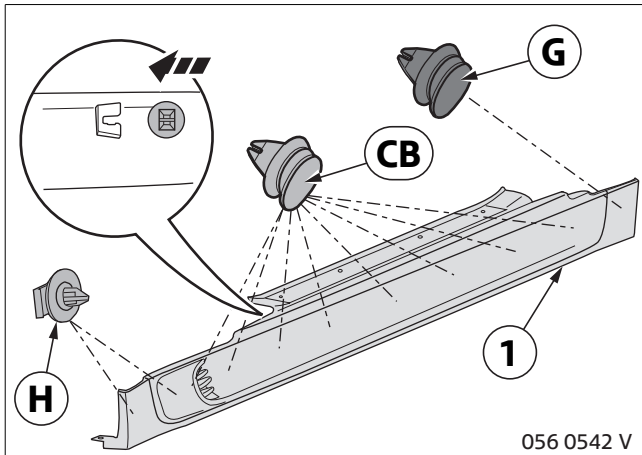


Insert the entire sill air insert (2) from the back of the sill trim (1) into the cut-out opening and allow it to engage.


6. Completing the sill trim



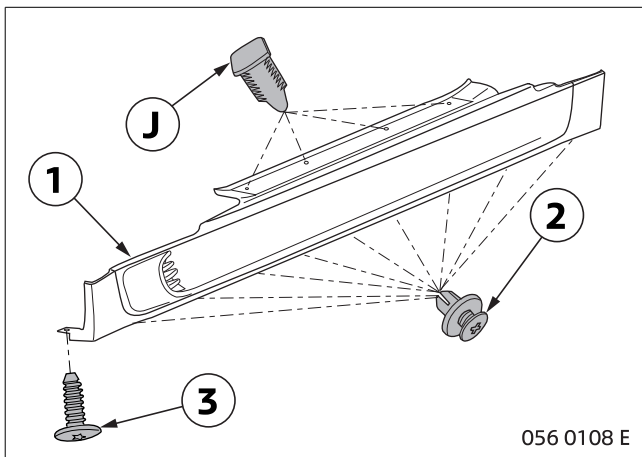
Push white clip **H** and black clip **G** into the retaining grooves provided on the back of the sill trim (1).



For R57 only:

 Red clip **CB** with part number **51 71 7 127 742** must be ordered separately. ◀

Push white clip **H** and black clip **G** and red clip **CB** into the retaining grooves provided on the back of the sill trim (1).

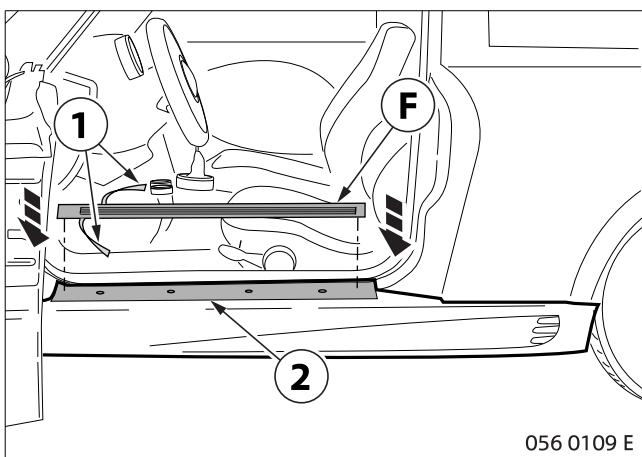


For all cars:

Install the sill trim (1) on the car in accordance with **ISTA**:

- use the expanding rivets (2) and
- torx screws (3) from the removal process to do this.

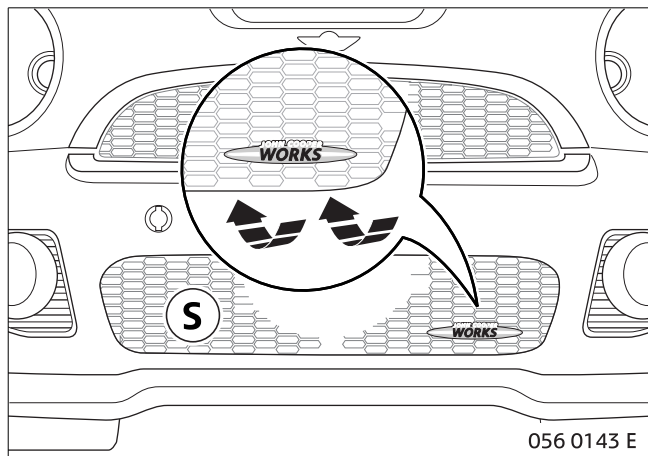
Insert clip **J** on the top of the sill.



Remove the protective film on the adhesive pads (1) from the underside of entrance finisher **F**.

Place finisher **F** on the top of the sill trim (2) and press firmly into place.

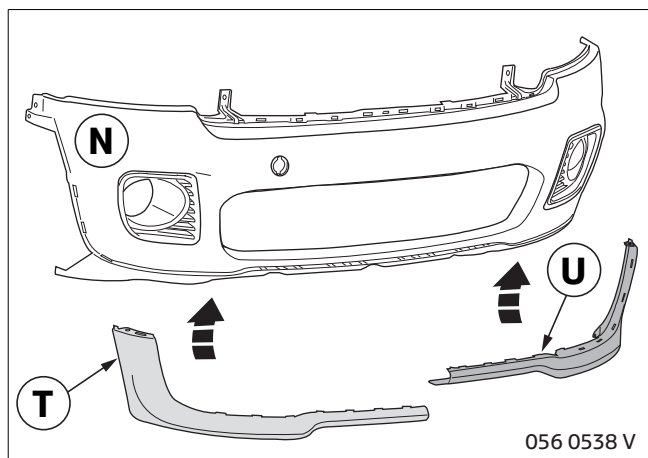
7. Completing the front bumper



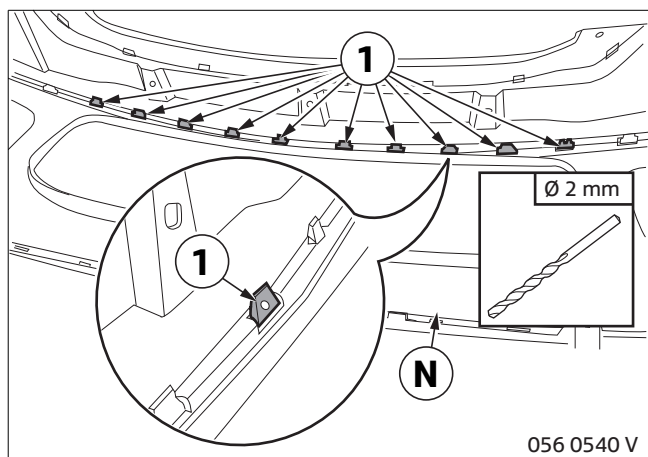
Only for MINI Cooper JCW:

Screw the JCW badge on the grille of air inlet **S** from behind, as shown in the diagram.

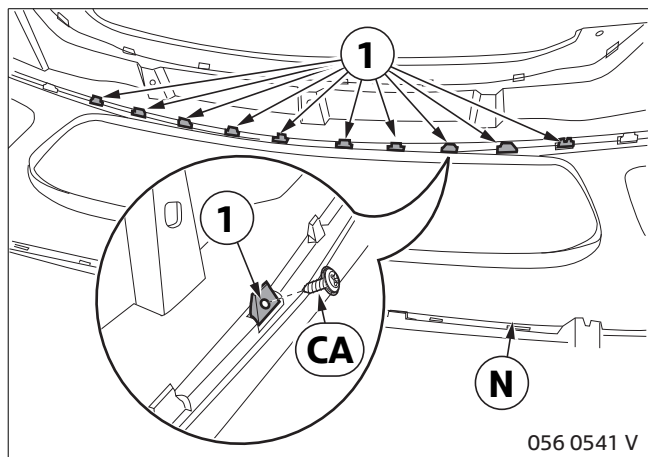
The JCW badge is not included in the supplied package of the Aerodynamics package. It is only included with the JCW Tuning Kit or JCW special models.



Place front right flare **T** and front left flare **U** on the underside of front bumper trim **N** and allow them to engage.

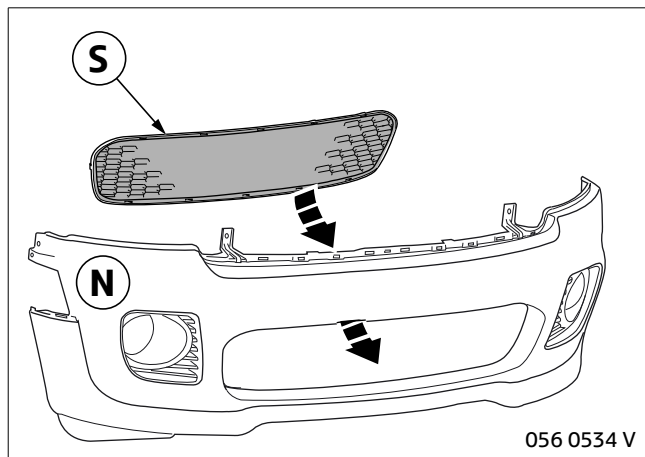


Drill through the 10 locking lugs (1) on front flare **T** and **U** using a drill of **diameter = 2 mm** through locking lug (1) and into front bumper trim **N**.



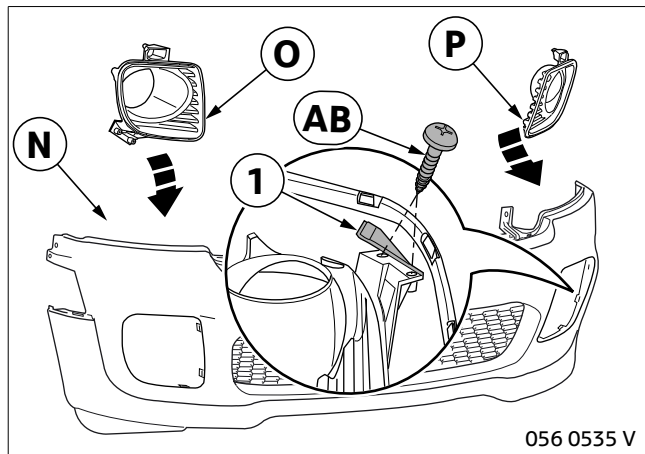
Securely fasten the 10 locking lugs on front flare **T** and **U** using self-tapping screws **CA** to front bumper trim **N**.

7. Completing the front bumper



☐ For cars with brake air channel, consult
EBA 0129 2 155 612. ◀

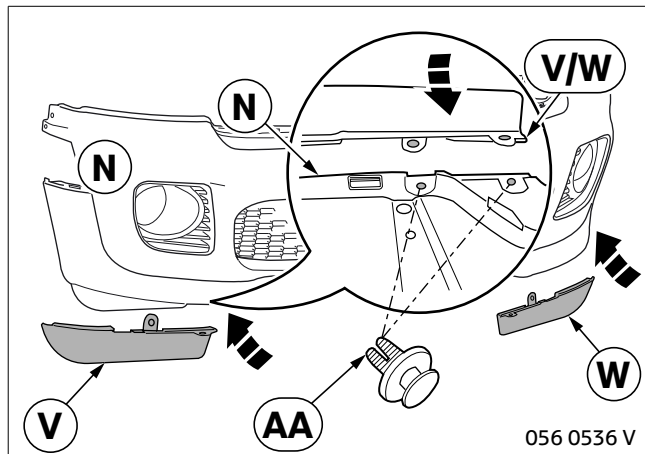
Afterwards, place air inlet grille **S** into front bumper trim **N** and allow it to engage.



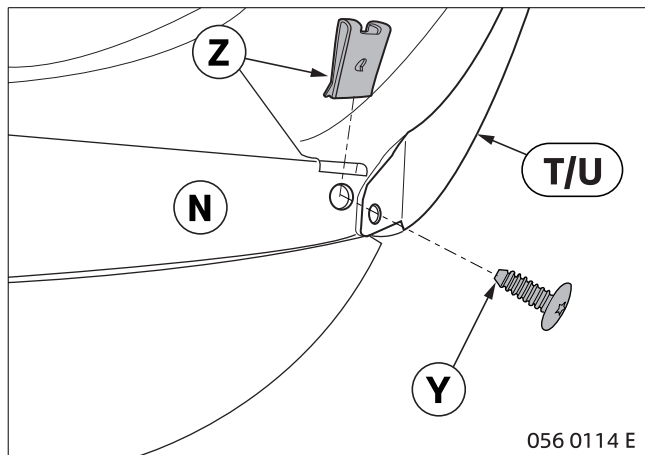
Insert fog light finisher **O** and fog light finisher **P** into front bumper trim **N** and allow them to engage.

Open the moulded-on hinge (1) on fog light finisher **O/P** and secure with screws **AB**.

Remove the fog light from the series bumper trim and install into bumper trim **N**.

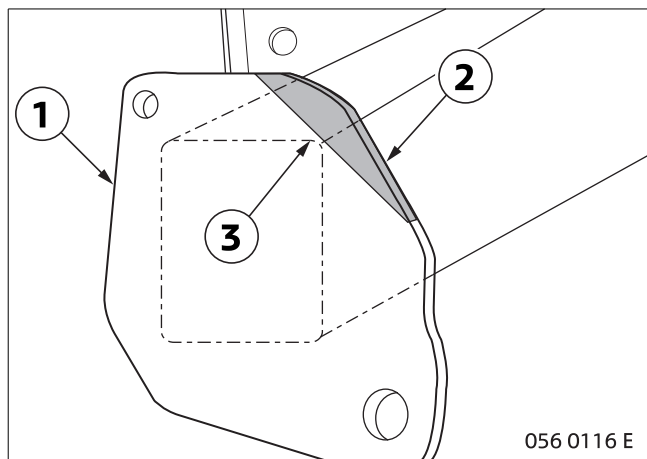


Not for MINI Cooper S without brake air channel:
Place air guide **V** and air guide **W** on the underside of front bumper trim **N** and join with expanding rivet **AA**.




Place sheet metal nut **Z** in the holder on bumper **N**. Secure spoiler **T/U** using sheet metal screw **Y** to the bumper.

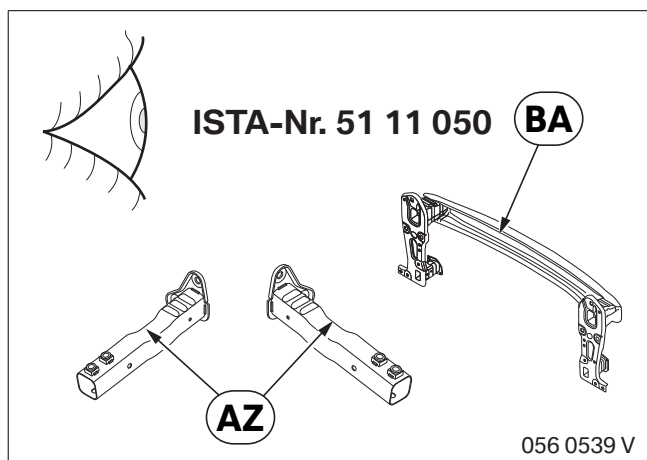
7. Completing the front bumper



For MINI Coopers built before 12/06 only:
Cut on the front right and left bumper support.

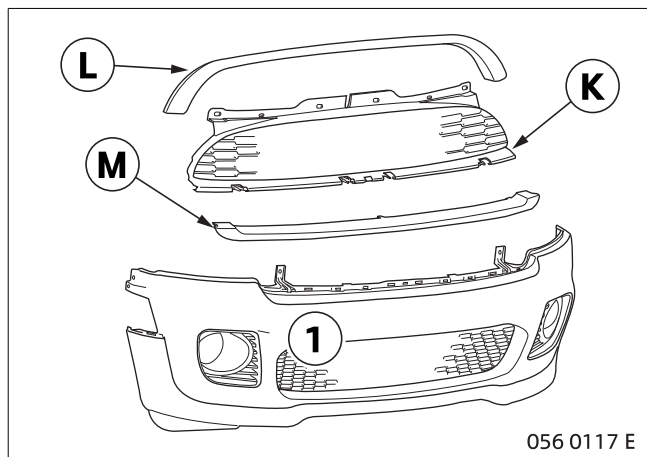
Remove the marked area (2) on the bumper support (1) to the radius (3).

 Carry out the cutting process on the front left bumper support in the same manner, but the opposite way round. ◀



Only for cars built after 08/10:

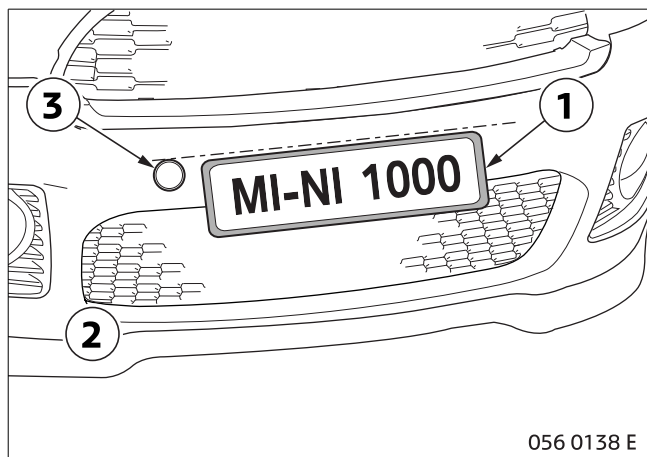
Fit front bumper support **BA** and front bumper mount **AZ** using the enclosed fastening parts from the conversion package (which must be ordered separately) as per ISTA.



For all cars:

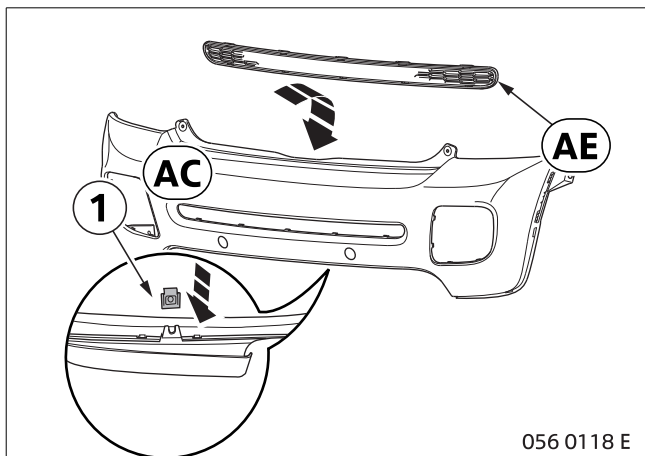
Fit the pre-assembled bumper (1) and the air inlet grille **K** and air inlet finishers **L/M** as per ISTA onto the car.

For cars with the black band in the car colour, the wheel arch trims **AC** and **AD** (see ISTA) must be fitted.



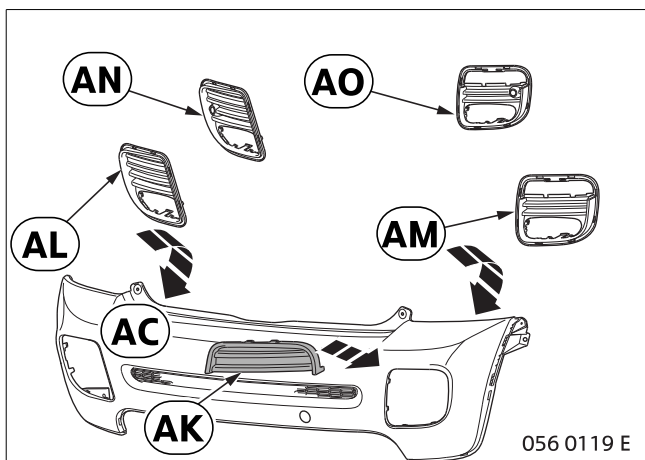
The licence plate (1) is aligned with the bumper (2) using the upper border of the towing hook opening (3).

8. Completing the rear bumper



Plug air outlet grille **AE** from inside into bumper trim **AC** and allow it to engage.

Take the sheet metal nut (1) (right-hand holder next to the exhaust) from the standard bumper.



For cars with SA 507 (PDC) only:

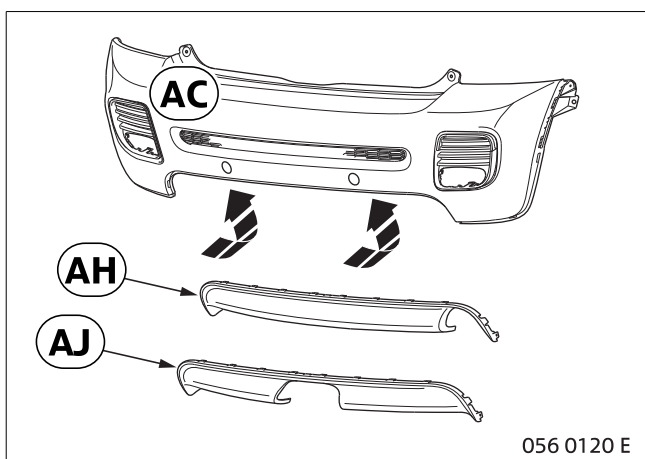
Insert right-hand air outlet grille **AO** and left-hand air outlet grille **AN** from inside into bumper trim **AC** and allow them to engage.

For cars without SA 507 (PDC) only:

Insert right-hand air outlet grille **AM** and left-hand air outlet grille **AL** from inside into bumper trim **AC** and allow them to engage.

For all cars:

Place towing eyelet finisher **AK** from outside onto right-hand air outlet grille **AM/AO** and allow it to engage.

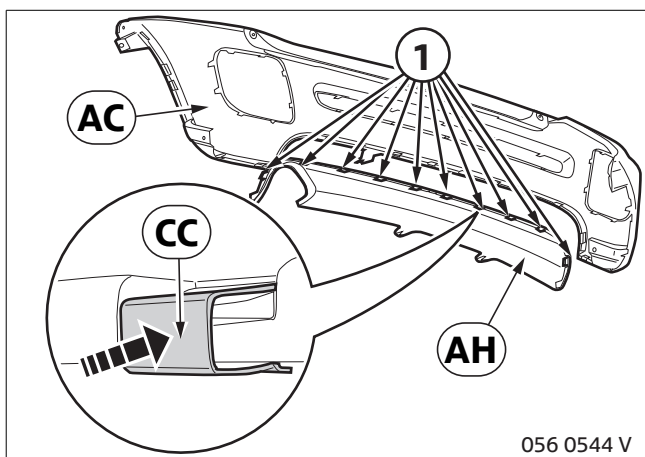


For MINI Cooper S only:

Insert bumper finisher **AJ** from inside into bumper trim **AC** and allow it to engage.

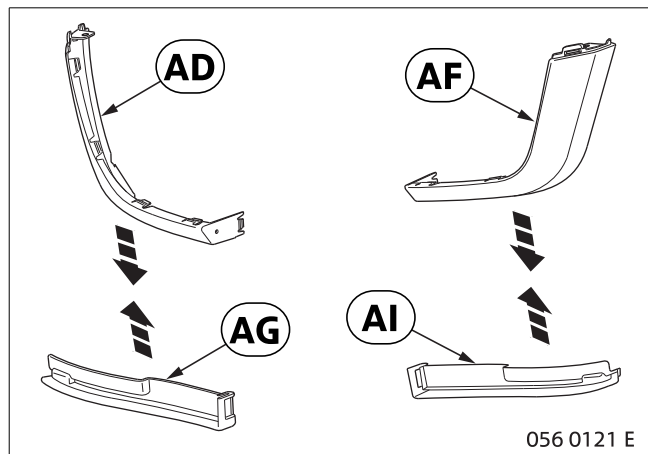
For all other cars:

Insert bumper finisher **AH** from inside into bumper trim **AC** and allow it to engage.



Also connect bumper finisher **AH** and bumper trim **AC** from inside using clips **CC** to points (1).

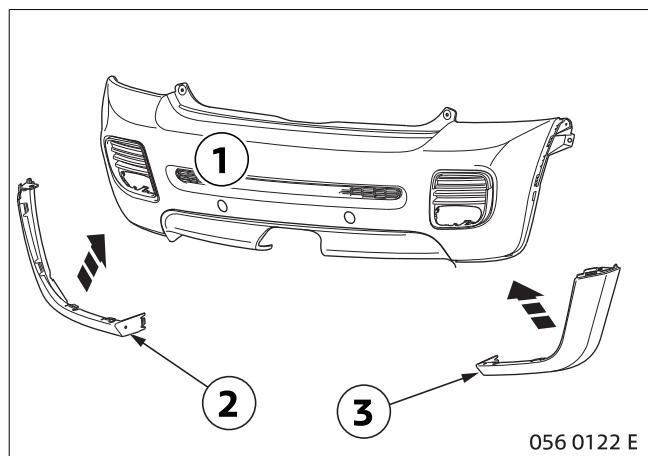
8. Completing the rear bumper



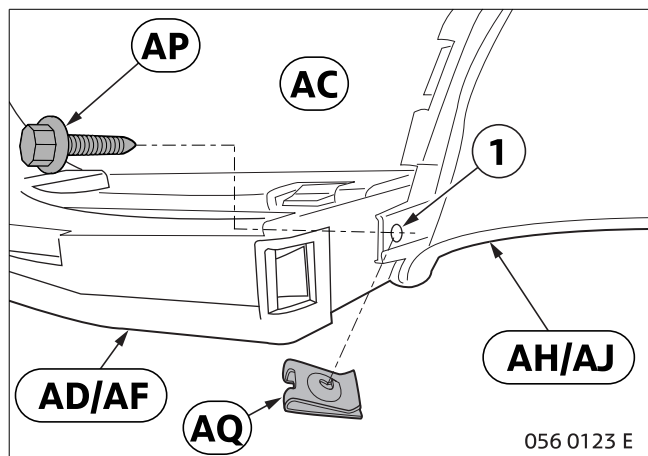
For all cars:

Place left-hand bulkhead **AG** on left-hand flare **AD** and allow it to engage.

Place right-hand bulkhead **AI** on right-hand flare **AF** and allow it to engage.



Place the flares (2) and (3) completed with the bulkheads on either side on the bumper trim (1) and allow them to engage.



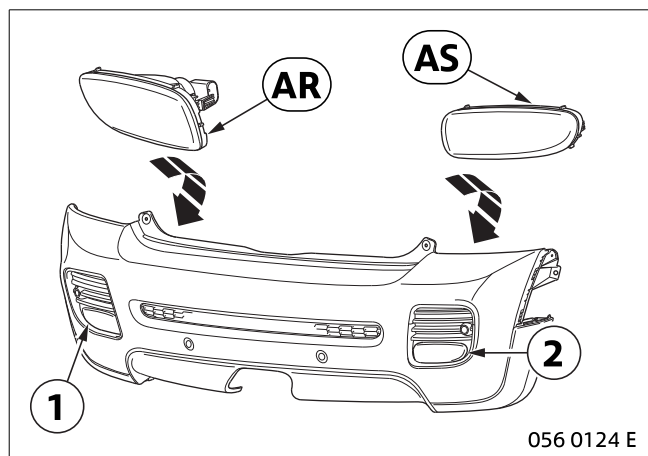
The diagram shows the inside of bumper trim **AC**.

Create the connection between flare **AD/AF** and bumper finisher **AH/AJ** as follows:

Place sheet metal nut **AQ** on the lug (1) of bumper finisher **AH/AJ**.

Now connect flare **AD/AF** and bumper finisher **AH/AJ** using hexagon screw **AP**.

8. Completing the rear bumper



Clip rear fog lights **AR/AS** from inside into the left/right air outlet grille (1/2).

Only for Cooper S built before 08/10:

Adopt the rear fog lights from the series bumper.

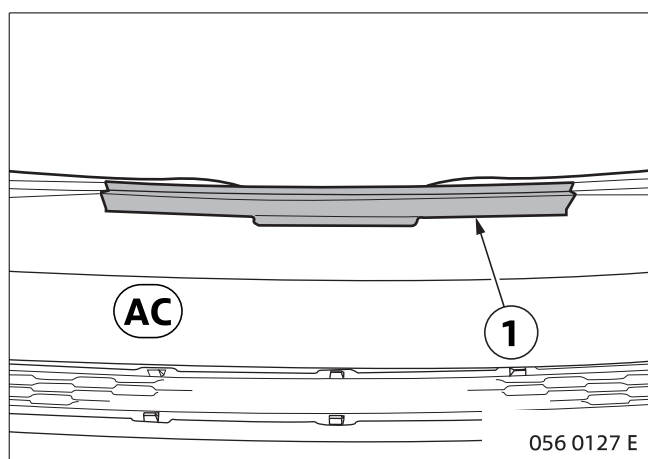
Only for cars built after 08/10:

▶ On Cooper S cars built after 08/10, the rear fog lights (RFL) must be ordered separately (see EPC for further details). ◀

Use reversing lights (RL) **BC** from the conversion package.

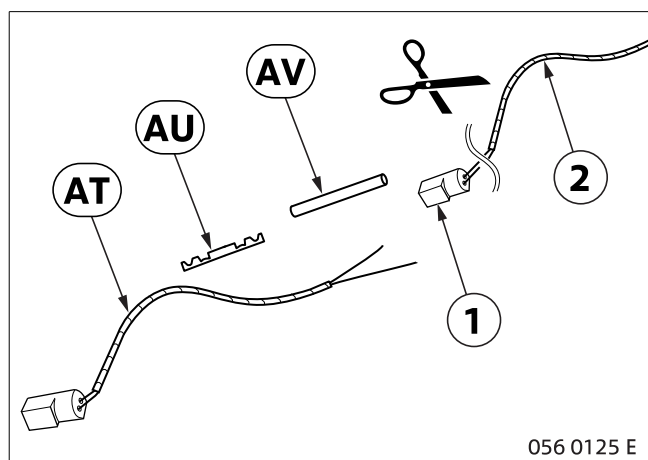
Install the lights as per the following matrix:

Left		Right
NSL	US (if SA5AA)/ECE LHD	RSW
RSW	ECE RHD	NSL
RSW	US (if not SA5AA)	RSW



For all cars:

Remove the guide rail (1) from the series bumper and fit it to retrofit bumper **AC**.



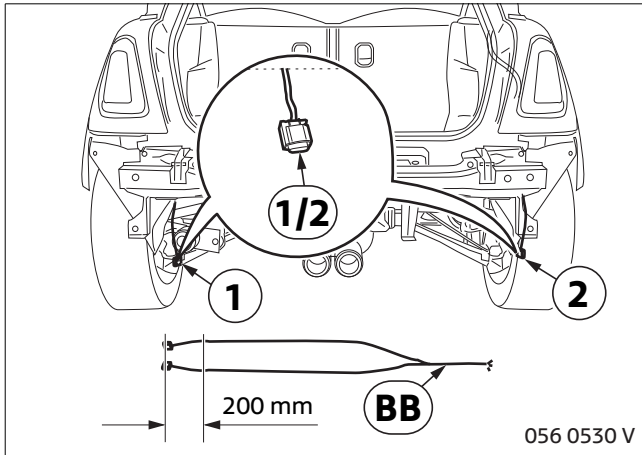
Only for One and Cooper S cars built before 08/10:

Disconnect the plug (1) from the vehicle wiring harness for the rear fog lights (2).

Connect adapter wiring harness **AT** using butt-joint connector **AU** and shrink hose **AB** with the vehicle wiring harness for the rear fog lights (2). On **LHD** cars, connect left-hand rear fog light **AR**.

On **RHD** cars, connect right-hand rear fog light **AS**. Close the plug casing of the **non-connected** rear fog light with shrink hose **AW** so it is water-tight.

8. Completing the rear bumper



Only for Cooper S built after 08/10:

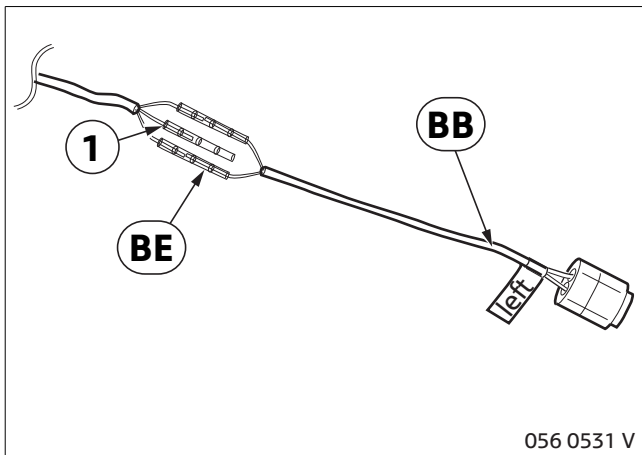
Cut off the 3-pin plug on the left (1) and right (2) of the car for the combined rear fog lights/reversing light using a suitable tool.

Cut off both ends with plug casing of wiring harness **BB** at approx. 200 mm

▶ Note the labelling on wiring harness **BB**. ◀

Insulate the three cable ends of the combined rear fog lights/reversing lights. Insulate both cable ends of wiring harness **BB** and connect using shrink connector **BE**, as described in section 9, "Connection matrix for R5x LCI Aerokit adapter wiring harness".

Insulate the remaining cable end (1) of the combined rear fog lights/reversing lights using shrink connector **BE**.

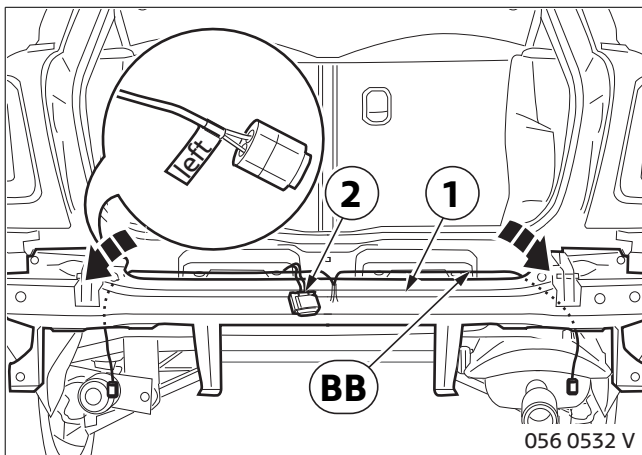


Only for One and Cooper cars built after 08/10:

▶ Note the labelling on wiring harness **BB**. ◀

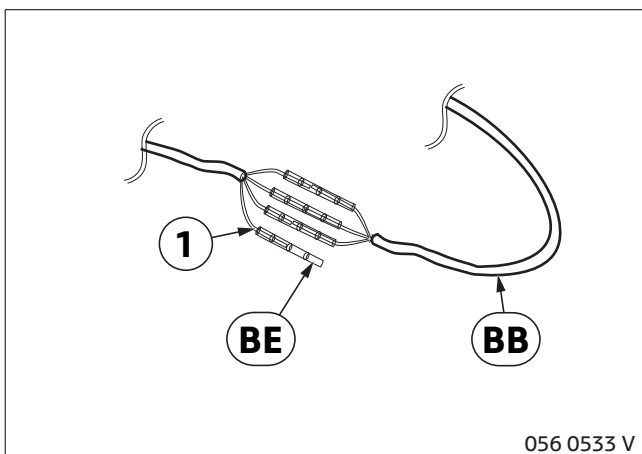
Route wiring harness **BB** from the centre to the left and right along rear bumper support (1) and secure with cable ties.

Cut off the existing plugs (2) on the combined rear fog lights/reversing lights.

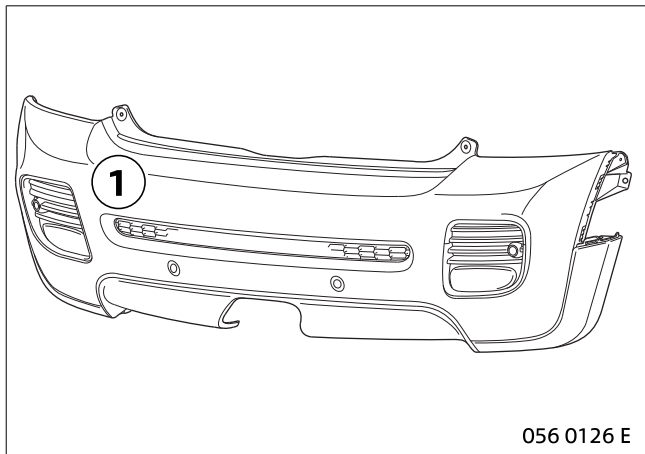


Insulate the cable ends of the combined rear fog lights/reversing lights. Insulate the three cable ends of wiring harness **BB** and connect using shrink connector **BE**, as described in section 9, "Connection matrix for R5x LCI Aerokit adapter wiring harness".

Insulate the remaining cable end (1) of the combined rear fog lights/reversing lights using shrink connector **BE**.



8. Completing the rear bumper



Only for cars built after 08/10:

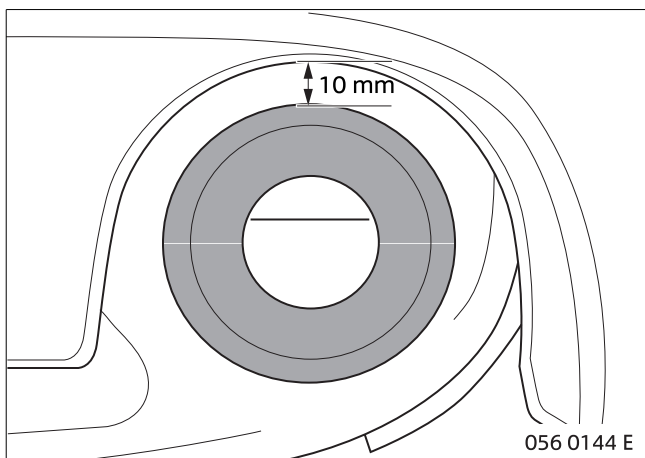
Install rear bumper support **BD** using the fastening points from the conversion package as per ISTA 51 12 050.

For cars with SA 507 (PDC) only:

Plug the PDC sensors into the bumper trim.

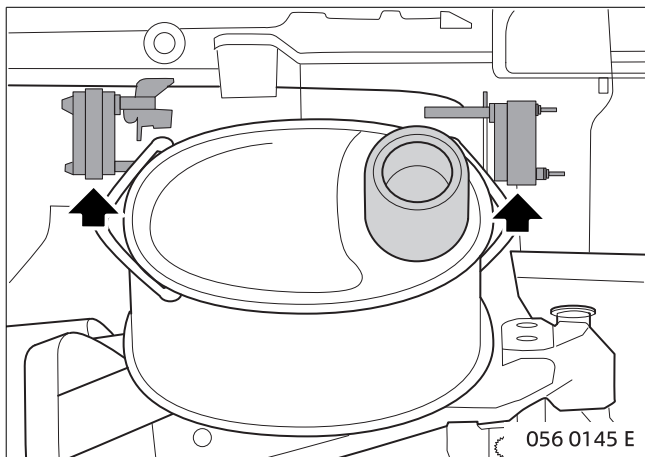
For all cars:

Secure the pre-assembled bumper trim (1) to the vehicle in accordance with **ISTA**.

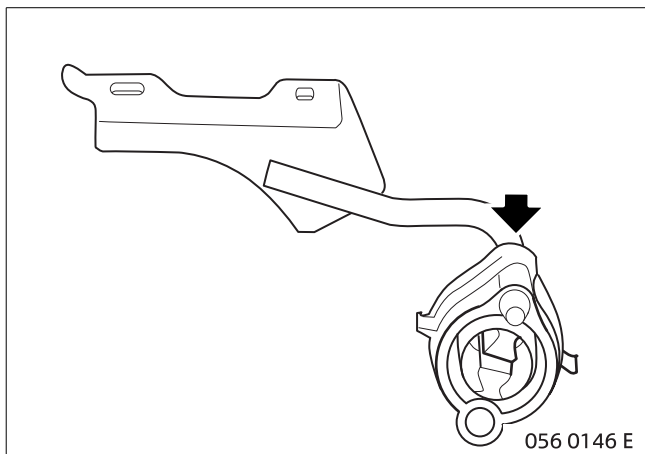


For Cooper only:

If the distance is less than 10 mm, the following work must be carried out in order to increase the distance to at least 10 mm.



Unscrew the suspension fittings for the exhaust system.



Bend the holder by the required degree downwards, so that the distance between the tail pipe and the rear apron is at least 10 mm. See figure 056 0144E.

Then install the two holders and secure the suspension fittings to the exhaust system.

9. Connection matrix for the R5x LCI Aerokit adapter wiring harness

Cooper S			
ECE RHD			
Left-hand side of the car		Right-hand side of the car	
Standard wiring harness	Adapter wiring harness	Standard wiring harness	Adapter wiring harness
PIN 3 GN	Le SW	PIN 1 BR	Ri BR
PIN 1 BR	Le BR	PIN 2 SW/BL	Ri WS
PIN 2 SW/WS	remains free, insulated	PIN 3 BL/GR	remains free, insulated
ECE LHD			
Left-hand side of the car		Right-hand side of the car	
Standard wiring harness	Adapter wiring harness	Standard wiring harness	Adapter wiring harness
PIN 2 SW/WS	Le SW	PIN 1 BR	Ri BR
PIN 1 BR	Le BR	PIN 3 BL/GR	Ri WS
PIN 3 GN	remains free, insulated	PIN 2 SW/BL	remains free, insulated
US without SA5AA			
Left-hand side of the car		Right-hand side of the car	
Standard wiring harness	Adapter wiring harness	Standard wiring harness	Adapter wiring harness
PIN 3 GN	LeSW	PIN 1 BR	Ri BR
PIN 1 BR	Le BR	PIN 3 BL/GR	Ri WS
PIN 2 SW/WS	remains free, insulated	PIN 2 SW/BL	remains free, insulated
US with SA5AA			
Left-hand side of the car		Right-hand side of the car	
Standard wiring harness	Adapter wiring harness	Standard wiring harness	Adapter wiring harness
PIN 3 GN	remains free, insulated	PIN 1 BR	Ri BR
PIN 1 BR	Le BR	PIN 3 BL/GR	Ri WS
PIN 2 SW/WS	Le SW	PIN 2 SW/BL	remains free, insulated

9. Connection matrix for the R5x LCI Aerokit adapter wiring harness

ONE/Cooper/Cooper D			
ECE LHD			
Standard wiring harness		Adapter wiring harness	
PIN 4 BL/GR		WS	
PIN 1 BR		BR	
PIN 3 SW		SW	
PIN 2 GN		remains free, insulated	
ECE RHD			
Standard wiring harness		Adapter wiring harness	
PIN 3 SW		WS	
PIN 1 BR		BR	
PIN 4 BL/GR		SW	
PIN 2 GN		remains free, insulated	
US with SA5AA			
Standard wiring harness		Adapter wiring harness	
PIN 4 BL/GR		WS	
PIN 1 BR		BR	
PIN 3 SW		SW	
PIN 2 GN		remains free, insulated	
US without SA5AA			
Standard wiring harness		Adapter wiring harness	
PIN 4 BL/GR		WS	
PIN 1 BR		BR	
PIN 2 GN		SW	
PIN 3 SW		remains free, insulated	

1. Concluding work and coding

The retrofit system requires coding.

- Connect the battery



Only required for ECE cars. ◀

Only required for US cars with SA5AA. ◀

- Encode the retrofit with ISSS (Integrated Software Service Station) via the – **Retrofit** – path

- Conduct a brief test
- Re-fit the car components as required