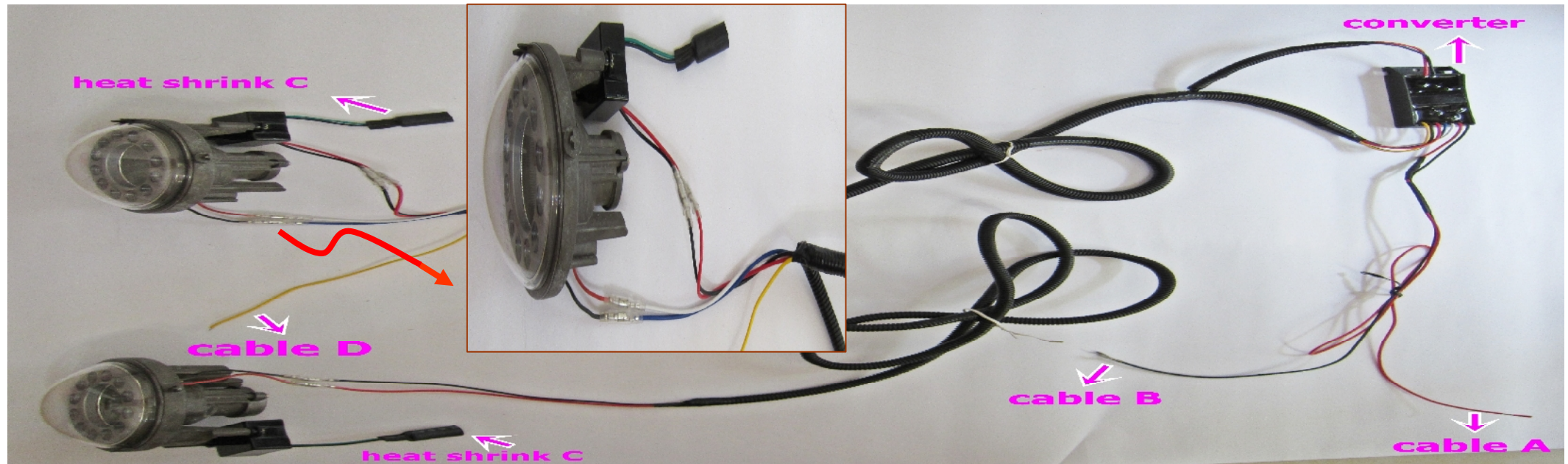


DRL-MINI R56/R60 Manual Instructions

請閱讀 DRL 佈局圖(如圖 1)。 Please read the DRL layout in Picture 1.

Picture 1: DRL LAYOUT



1.將 A 線穿過蓄電池(如圖 2)。

Push cable A through battery compartment as Picture 2.

2.將 A 線穿越手套箱，連接到配線盒內的點煙器(如圖 3、4、5)。

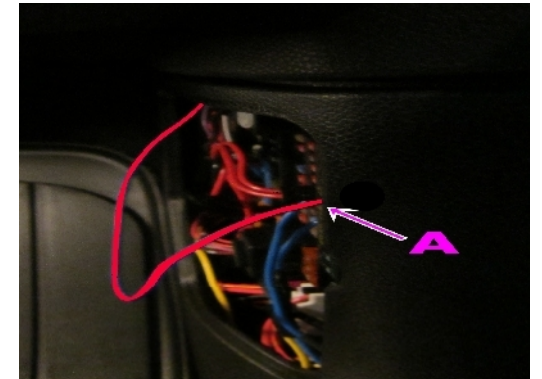
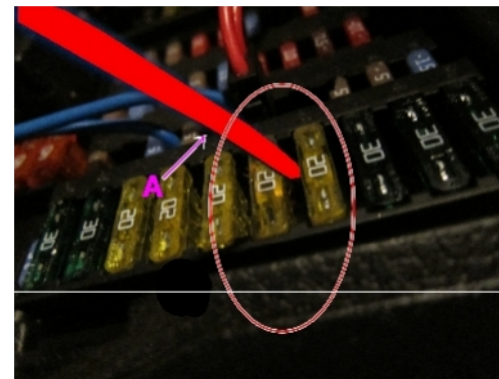
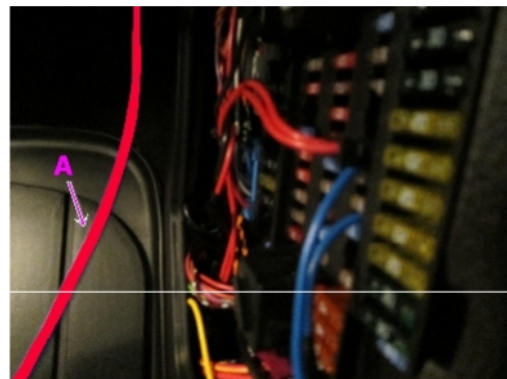
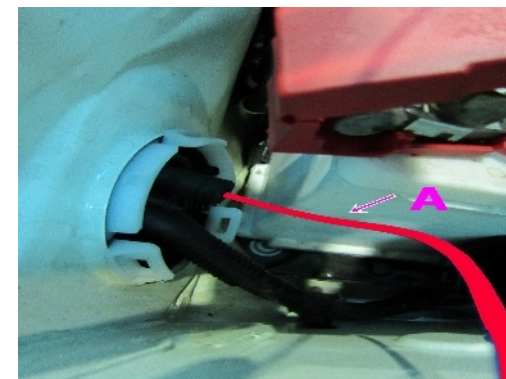
Pull cable A to connect cigarette plug fuse in distribution box which is under the glove box as Picture 3、4 and 5 shown.

Picture 2

Picture 3

Picture 4

Picture 5



3.黑色線 B 接地線(如圖 6)。

Grounding cable B as Picture 6.

4 安裝 DRL 於前保險桿(如圖 7)。

Install the DRL on the front bumper. as Picture 7.

5.將熱縮套管和位置燈插頭套在一起(如圖 7)，使用打火機火烤方式，讓熱縮套管和位置燈插頭結合(如圖 8)。

Combine the position (parking) light with heat shrink C as Picture 7. Use a lighter to make heat shrink and position light socket closely enclosed. as Picture 8

6 將 D 線和霧燈線直接捆在一起(如圖 9)。

Connect cable D with cable of front fog lamp directly or by a clip as Picture 9.

7.將控制器捆束於蓄電池室附近，即可。

Stick or fasten the converter in battery compartment or any place suitable.

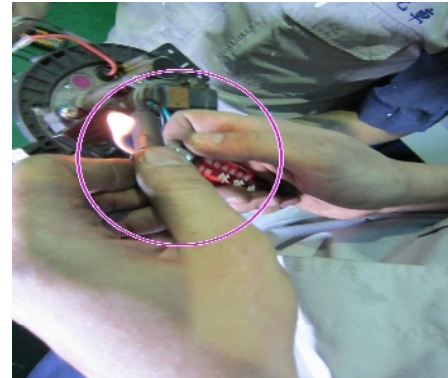
Picture 6



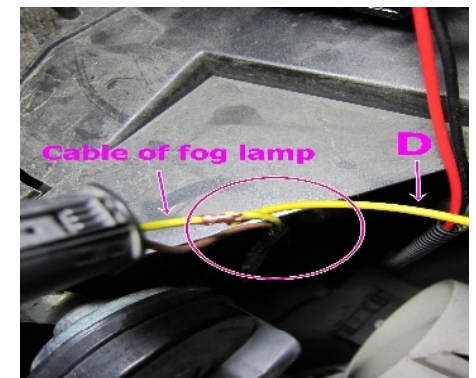
Picture 7



Picture 8



Picture 9



注意事項 Notice:

*開啓 DRL 會閃爍 5 秒，是因為車上電腦會自動偵測造成，屬正常現象。

DRL will flash about 5 seconds when it starts, since the vehicle will detect functionally.

*減亮功能：當位置燈或大燈亮時，DRL 會減亮。

Dimming function: It dims out when the position light or driving light is on.

*前霧燈亮時，DRL 會自動關掉

DRL will extinguish when the front fog lamp is lit up.

*DRL 的電流大約是 2 安培，如果有安裝其他裝置在配電盒裡點煙器關關上，煩請勿超過負荷。

The current of DRL is about 2 ampere ,please don't exceed the load allowed for cigarette plug fuse in distribution box if there is any other device installed on it .