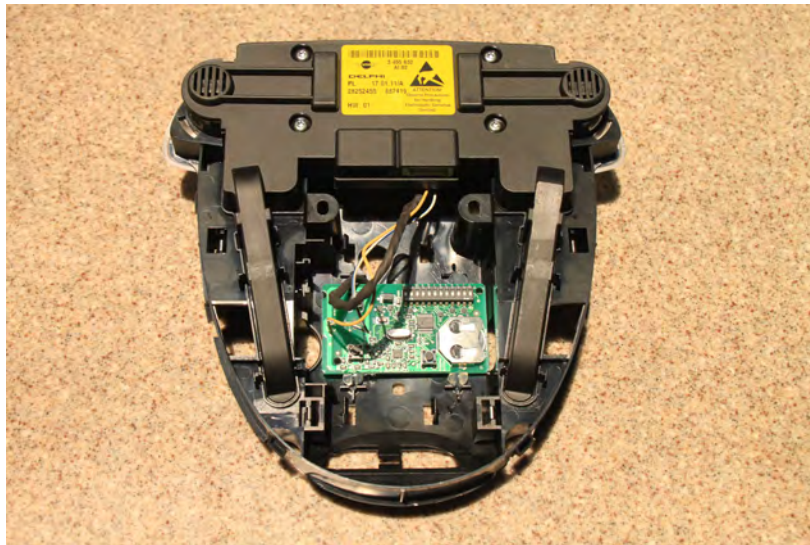


Garage Door Opener Retrofit - Overhead Switch Panel Countryman without Sunroof & Alarm

Parts:

- DPDT mini toggle center off momentary switch, part# 060-340 from parts-express.com
- 2 button garage door opener, local hardware store
- chrome push cap from a ball point pen, Office Depot or similar

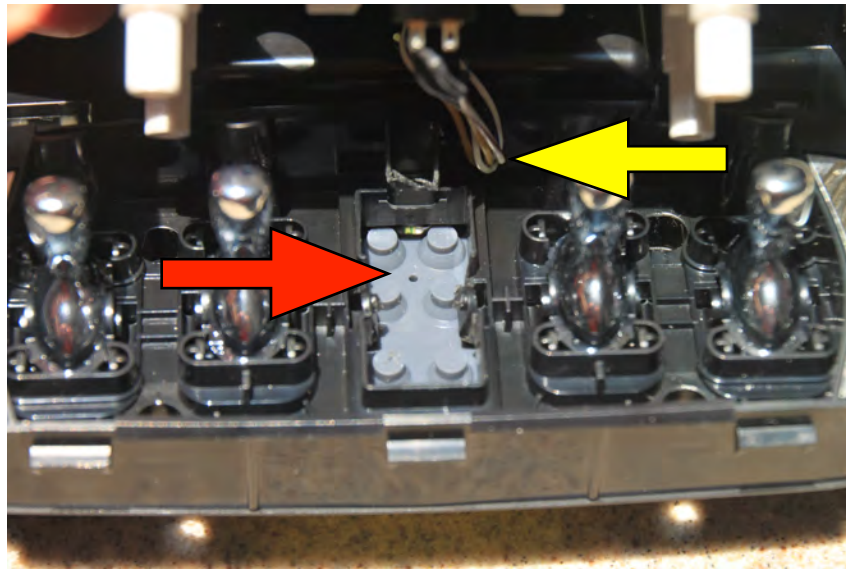
I used a two button garage door opener I got at Home Depot, I removed the circuit board which I mounted in the overhead assembly where the motion sensor would normally mount, I used a hot glue gun to mount the circuit board.



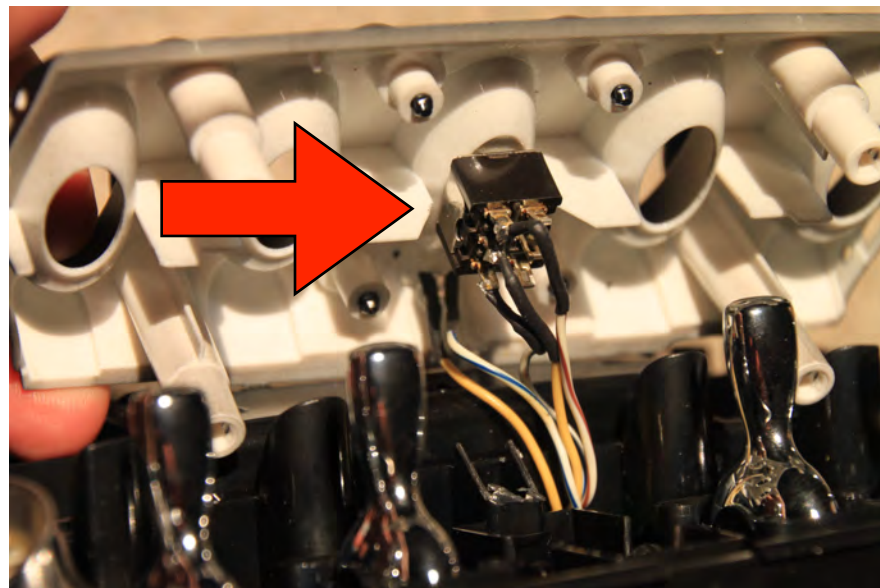
I unsoldered the LED from the circuit board and installed it in front of the switch bank, drilling a small hole and holding it in place with hot glue.



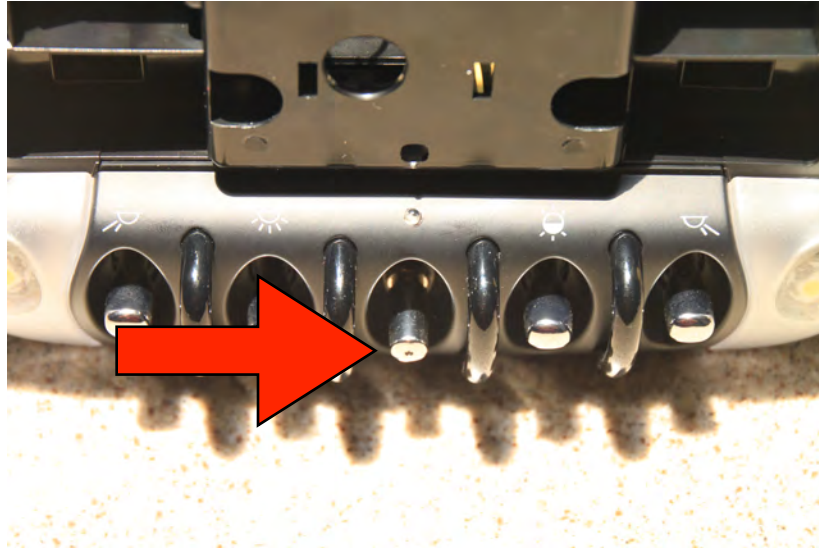
I had to cut away the plastic where the sunroof switch would normally mount to make clearance for the mini toggle switch, I also drilled a hole for the wires to pass through to the circuit board



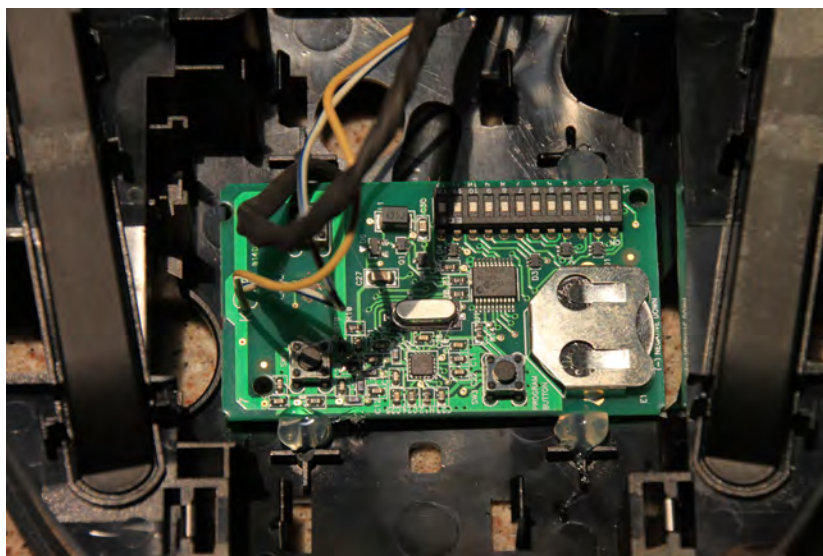
I drilled a hole in the sunroof switch blank and mounted the mini toggle switch.



I used the chrome cap from the ball point pen, using JB Weld to attach it to the mini toggle switch. The cap I used slid onto a plastic tube on the pen, I glued a piece of the tube onto the switch, then attached the cap.



I ran wires from the toggle switch to the circuit board, there was a common point for the two buttons (circuit board) that went to the center post on the mini toggle, the line for each of the buttons went to one of the outer posts on the mini toggle.



This is what it looks like when completed.....

