

OEM Rack Installation Instructions

Mini Cooper Clubman

Mini Cooper S Clubman

If you can it is best to pick up the kit at your dealer rather than have them send it to you. I say this because there are a few items you need to check for before you accept the kit.

Check for the following items:

1. Rubber hoses attached to rack mounting fixture as in Fig. 1
2. Keys – Make sure they are the correct ones by putting them in the key slot and turning them.
3. Tool kit is complete as in Fig. 2



Fig. 1

The rubber hose is there to protect you paint during installation and removal.

Mounting fixture

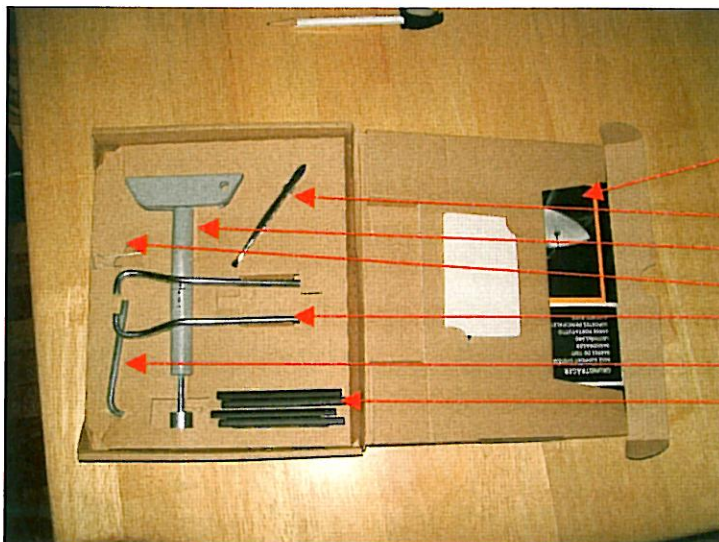


Fig. 2

Kit Contents:

1. Installation Manual (don't need it using these instructions)
2. Keys x2
3. Tweezers
4. Torque Wrench
5. Detaching Hook
6. Fitting Bracket
7. Allen Key
8. Cover Caps x4
9. Fitting Aid (white plastic card)

Installation Instructions:

For first time install start at step 1 if second or later install start at step 4

1. Push the fitting aid (white plastic card) between the roof strip and the roof and carefully remove the pre-stamped piece of the roof strip using the Tweezers.
 - a. If You can not find the opening they are located as follows:
 - i. Drivers front - 9-3/4" from where the front A pillar meets the roof Fig 3.
 - ii. Drivers rear - 10-3/8" rear of where B pillar meets roof. Fig 4.
 - iii. Pass front - 9-3/4" from where the front A pillar meets the roof Fig 3.
 - iv. Pass rear - 1-7/8" forward of where B pillar meets roof Fig 5.

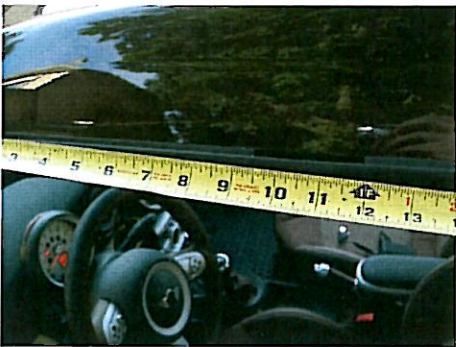


Fig 3



Fig 4



Fig 5

2. Loosen the brass nut on the clamping plates as shown in Fig 6. The clamping plates should then look as in Fig 7. The clamping plates will disengage the brass nut, this is okay as they need to rotate as far as possible without falling off.

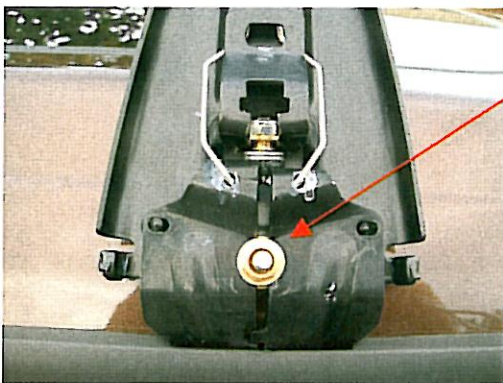


Fig 6

Brass Nut
Clamping Plates
Loosen bolts 1-1/2
turns
Cross Bar

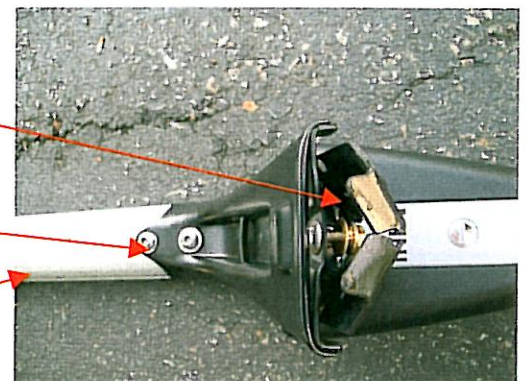


Fig 7

3. Loosen the four bolts that hold cross bar to mounting fixture, About 1-1/2 turns. Just loose enough to allow the cross bar and mounting fixture to slide a little bit. DO NOT remove these bolts as it will be very difficult to get the cross bar and the mounting fixture to line up properly after the mounting fixture is mounted to the car. Fig 7.
4. Starting with the rear cross bar, set it over car at its install location. Start on drivers rear.
5. While wiggling the clamping plates push in on them so that they engage the slot. They should have gone into the slot about half way at this point.

6. Insert the fitting bracket as shown in Fig 8 and use it to press down on the clamping plates in the mounting fixture. Slowly start to tighten the brass nut with the torque wrench while still wiggling the mounting fixture. When it seems to be starting to give some resistance tighten so that the 6 NM arrow and the closest arrow meet exactly This is barley hand tight. DO NOT OVER TIGHTEN.



Fig 8

7. Go around to the Passenger side and repeat step 4 and 5. (I found it easier to do if the doors were open).
8. Now place the front cross member on the car and repeat steps 4-6.
9. Tighten all the bolts that were loosened in step 3.
10. Once the racks are on properly there should be a gap between the rubber tube and the slope of the roof. As shown in Fig 9. It is a little difficult to see in the picture but there is a gap of about 1/8".



Fig 9

The rack is now installed on your vehicle. To remove follow all steps backwards. NOTE: I found that I did not need to loosen the four bolts holding the cross bar to the mounting fixture to remove or reinstall the racks.

Personal Notes Area: