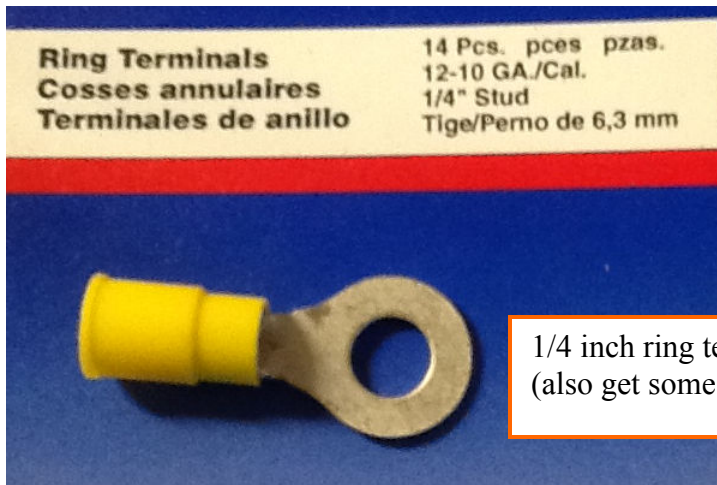


MATERIALS NEEDED!



1/4 inch ring terminals, 12 GAUGE
(also get some 1/2 inch ones too)



8 gauge wire
Get about 10 ft or so....

You will also need:

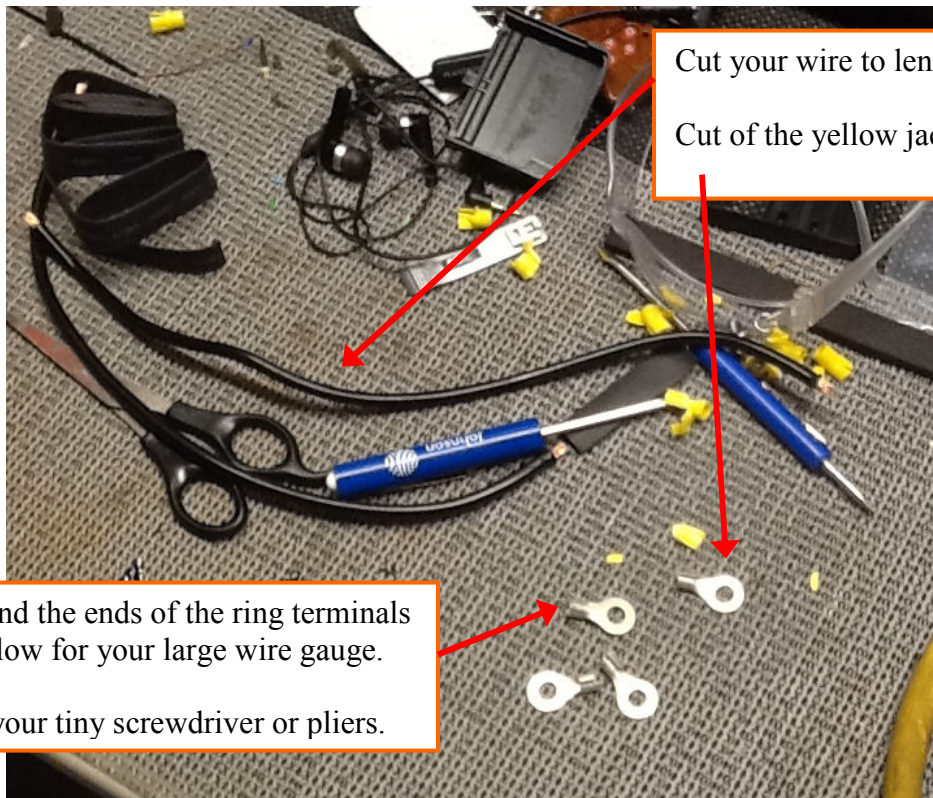
WIRE CUTTERS
WIRE STRIPPERS
SOLDERING IRON
SOLDER
HEAT SHRINK TUBING
LIGHTER OR HEAT GUN
SMALL SCREWDRIVER or TINY PLIERS
SCISSORS

SOCKET WRENCH AND SOCKETS

TIME, PATIENCE, and some GOJO!

MAKING YOUR WIRES!

MAKING YOUR WIRES!



Cut your wire to lengths. Strip the ends.

Cut off the yellow jackets on the ring terminals.

Expand the ends of the ring terminals to allow for your large wire gauge.

Use your tiny screwdriver or pliers.

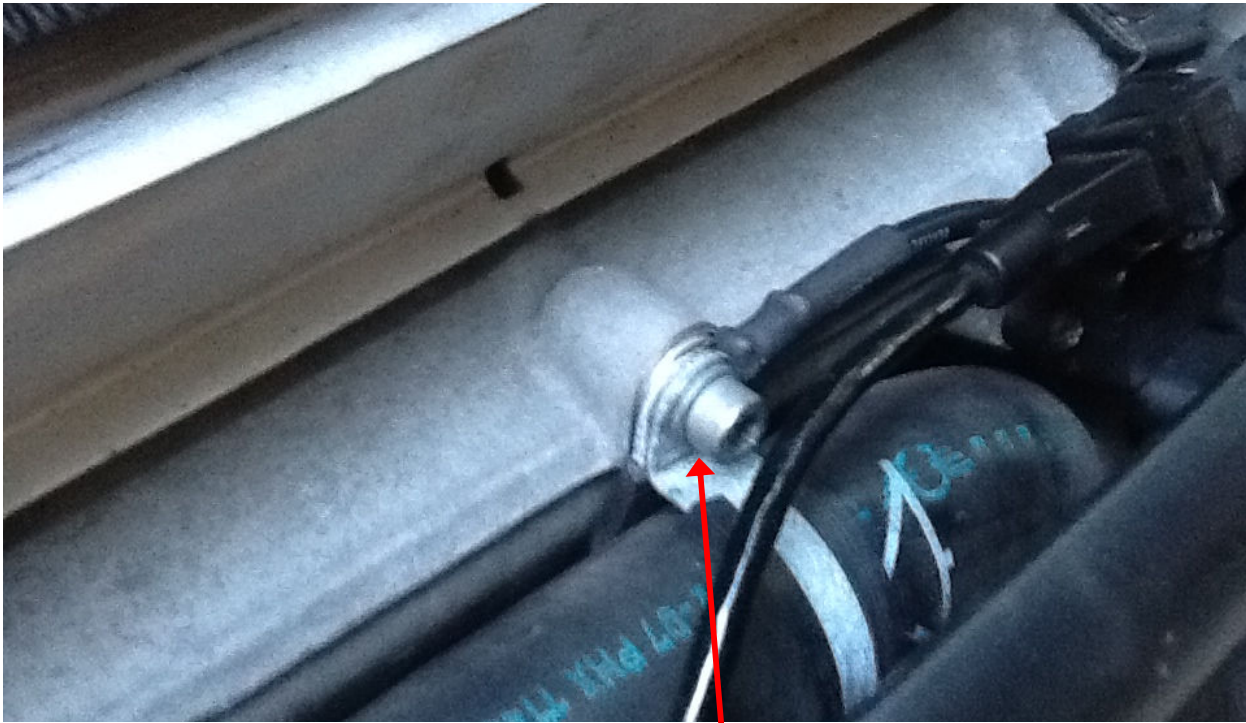


Solder the terminals to the wire.
Place heat shrink over connections.
Heat said heat shrink to shrink.

Enjoy your completed work 😊

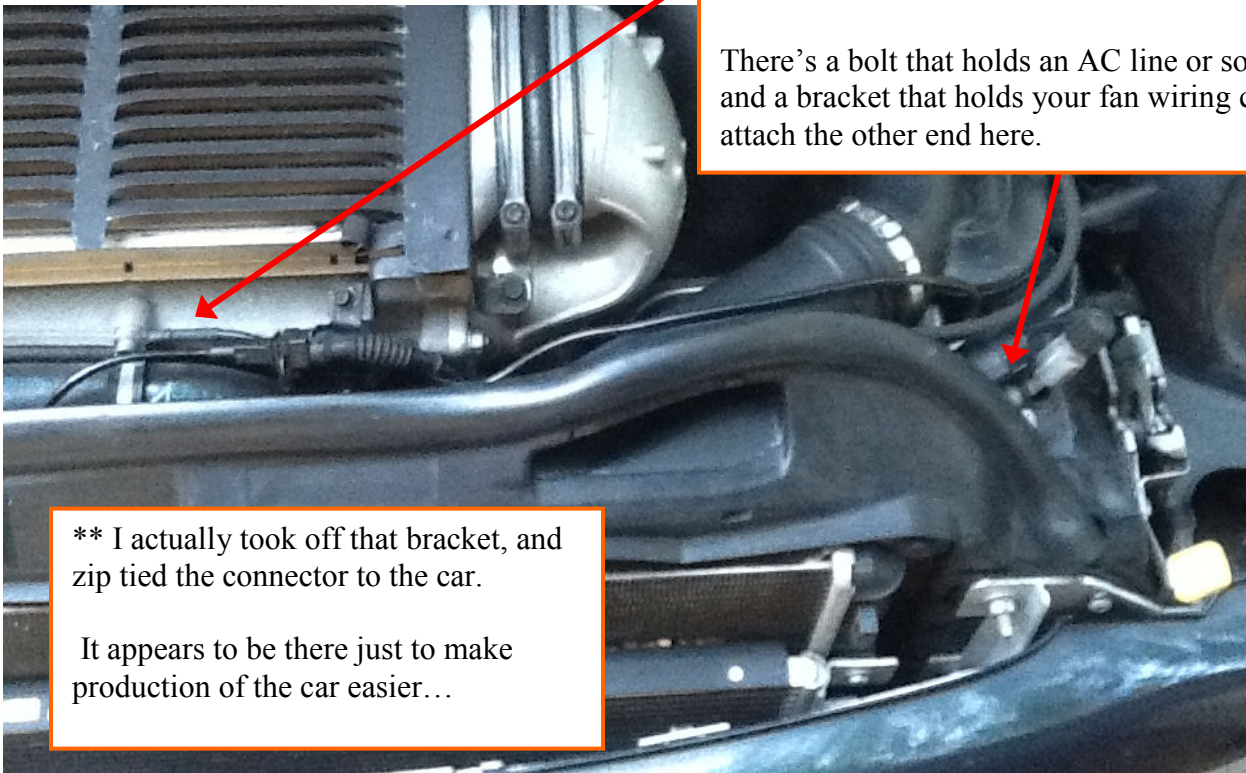
UNDER THE HOOD!

FRONT OF THE ENGINE!



Connect a wire Here...

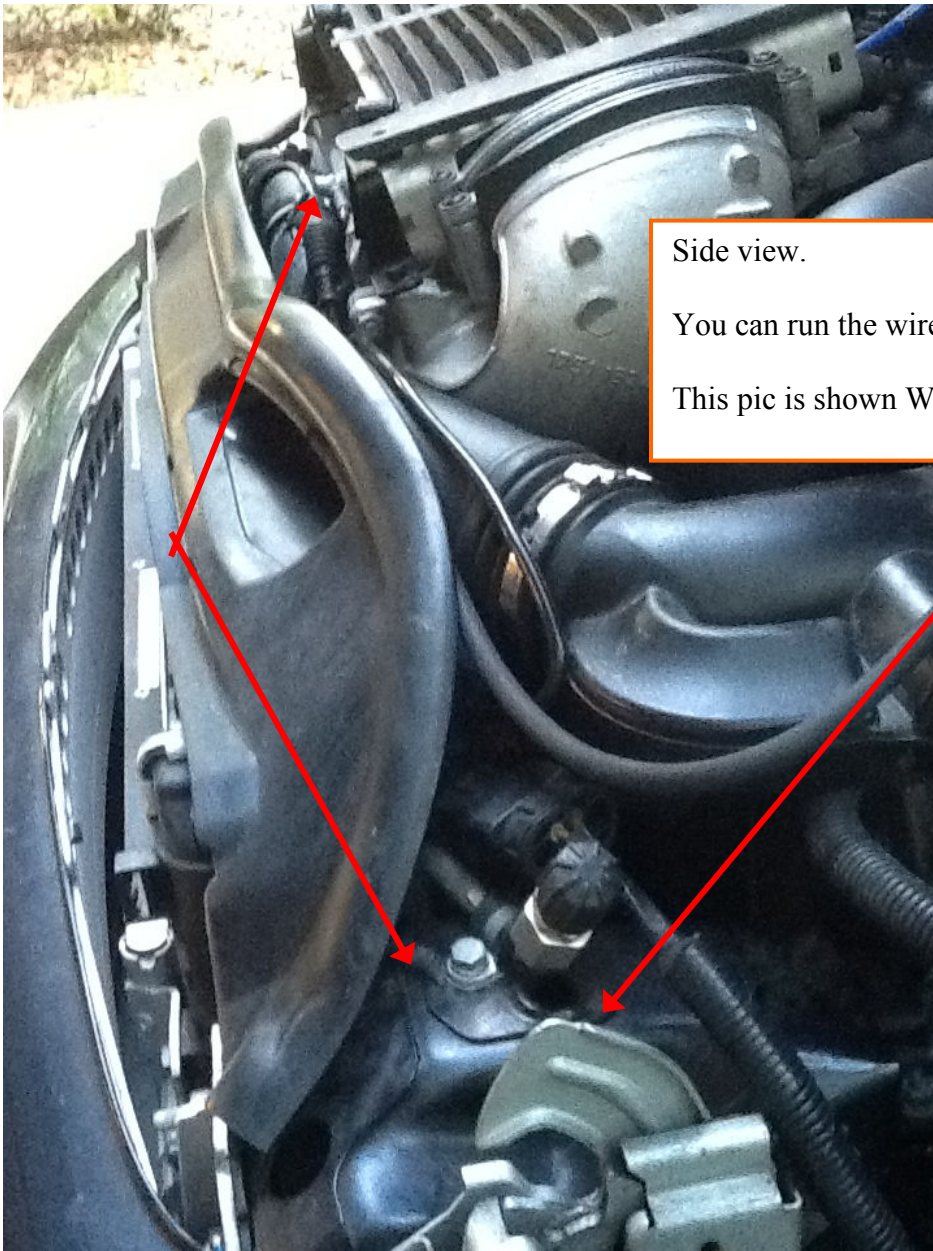
There's a bolt that holds an AC line or something, and a bracket that holds your fan wiring connector. attach the other end here.



** I actually took off that bracket, and zip tied the connector to the car.

It appears to be there just to make production of the car easier...

FRONT OF THE ENGINE



Side view.

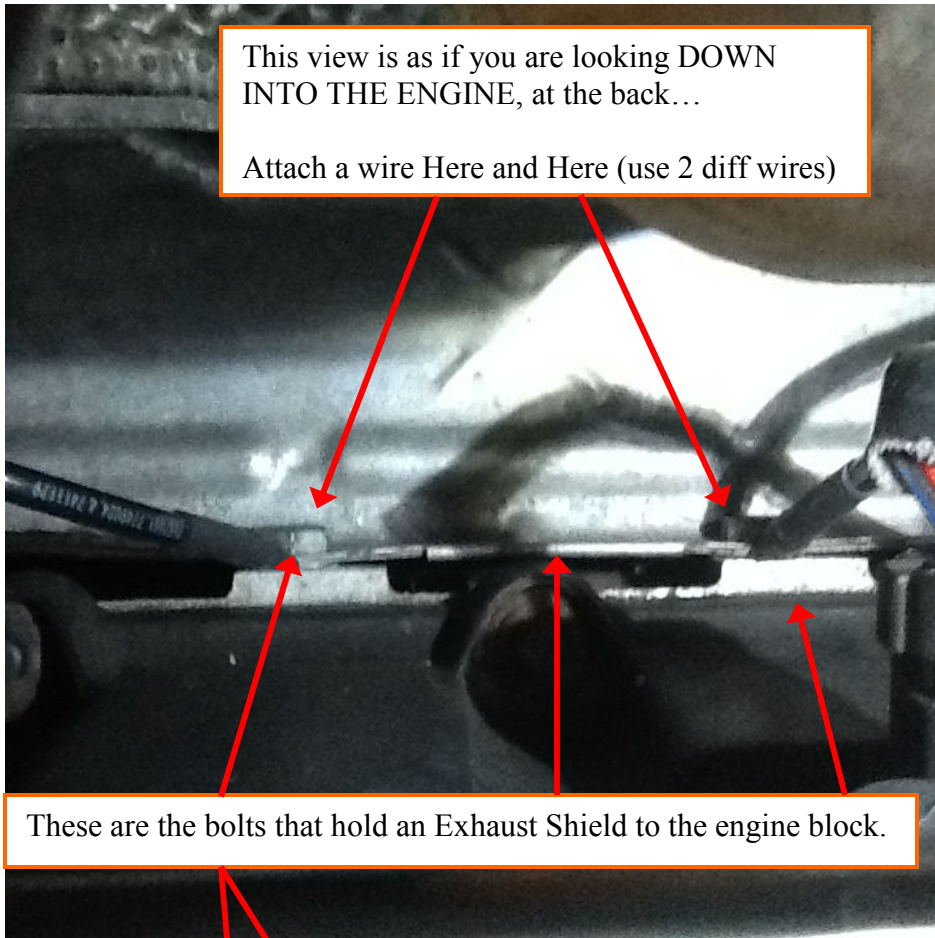
You can run the wire wherever really.

This pic is shown WITH that bracket.

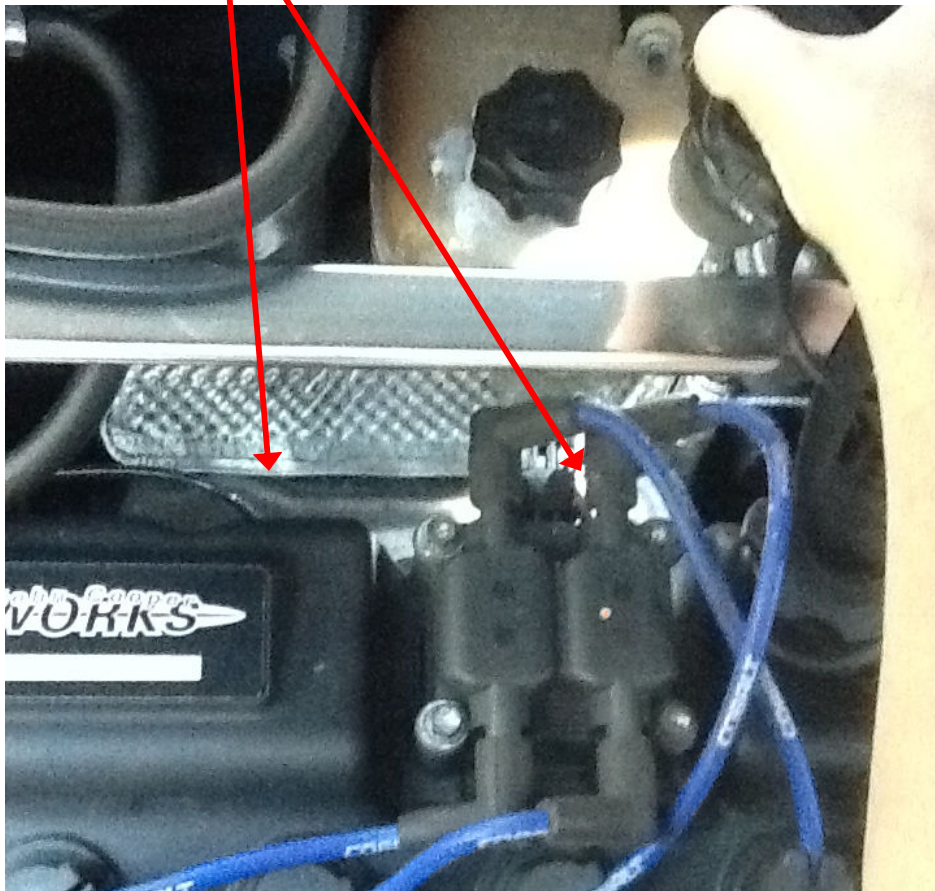
BACK OF THE ENGINE!

This view is as if you are looking DOWN INTO THE ENGINE, at the back...

Attach a wire Here and Here (use 2 diff wires)

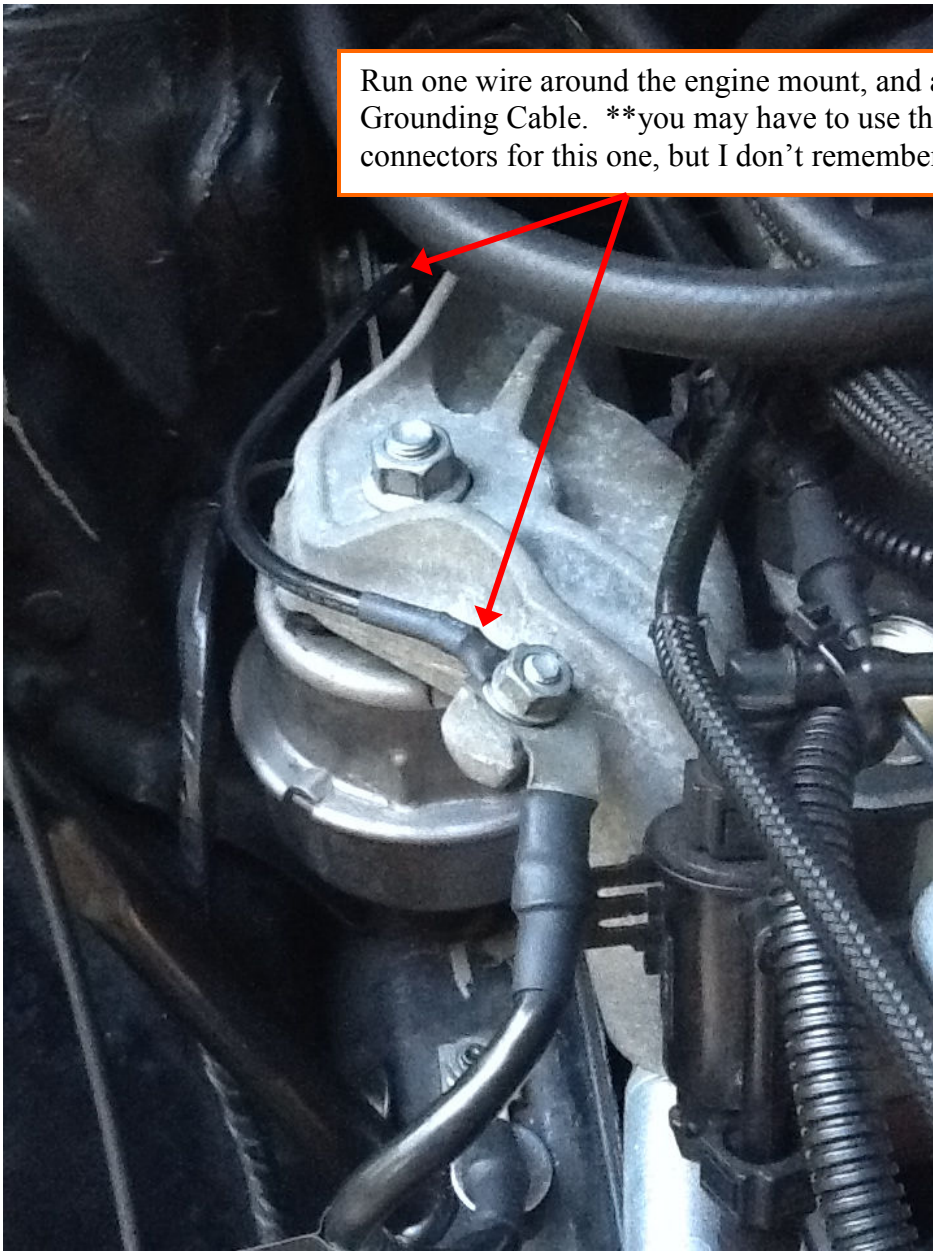


These are the bolts that hold an Exhaust Shield to the engine block.



PASSENGER SIDE OF THE ENGINE!

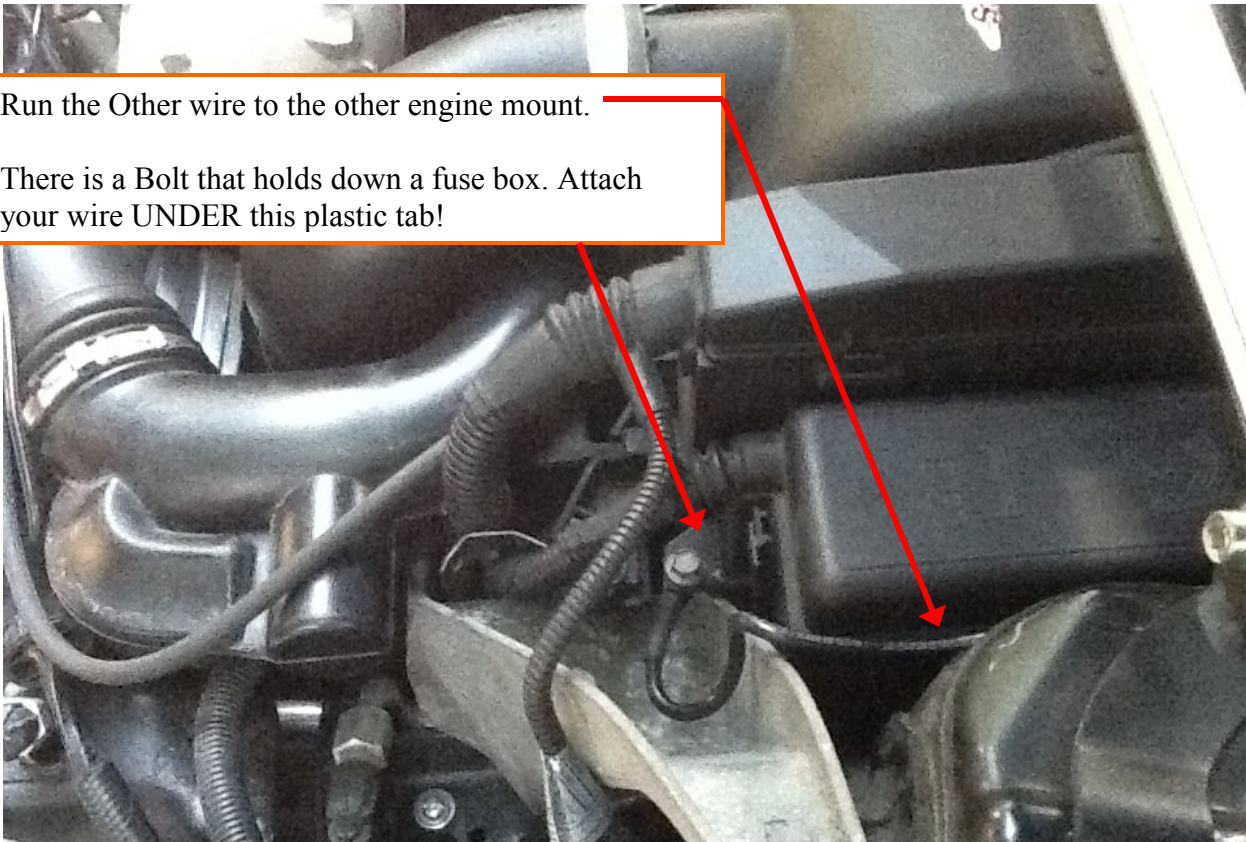
Run one wire around the engine mount, and attach it to the Stock Grounding Cable. **you may have to use those 1/2 inch connectors for this one, but I don't remember exactly **



DRIVER SIDE OF THE ENGINE!

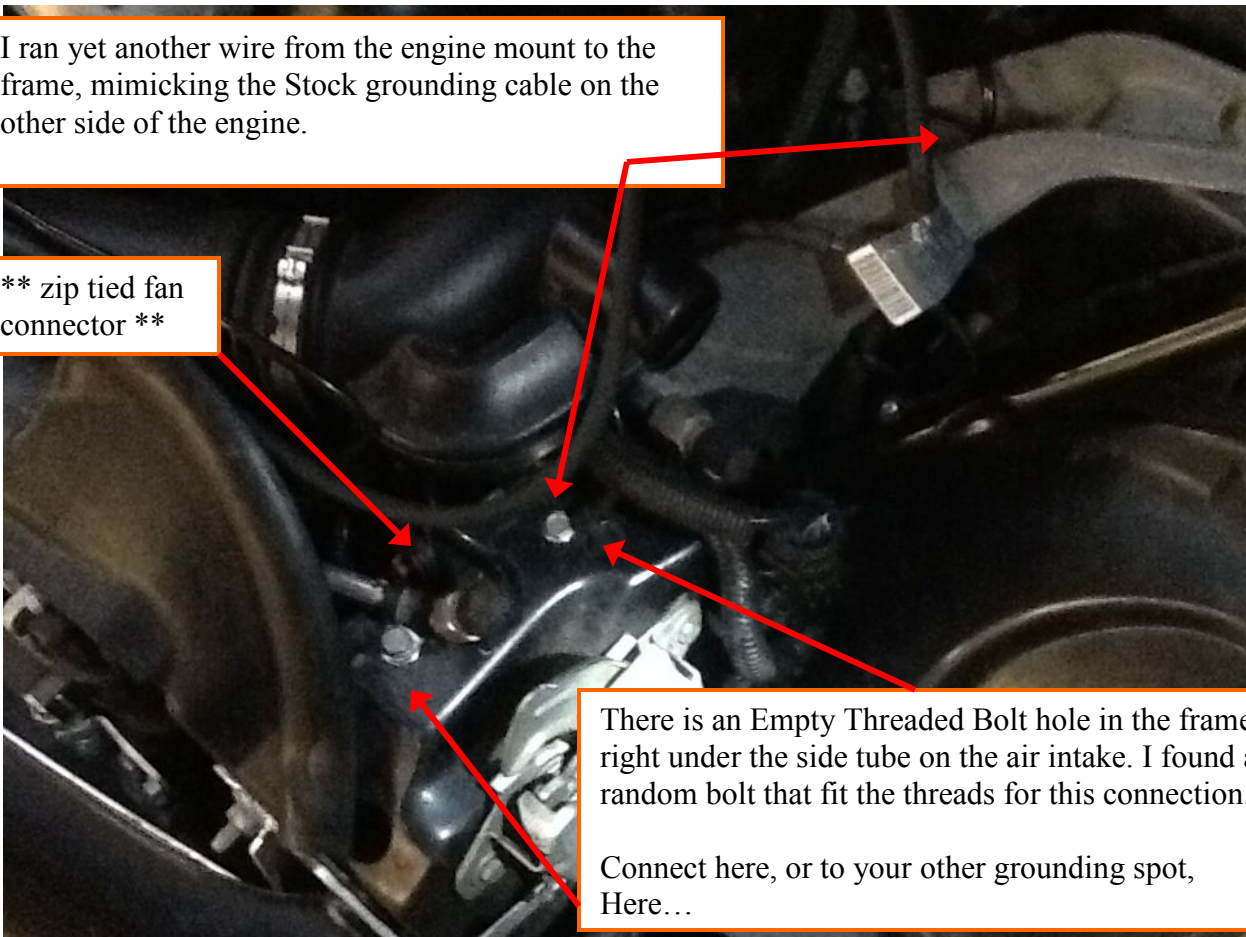
Run the Other wire to the other engine mount.

There is a Bolt that holds down a fuse box. Attach your wire UNDER this plastic tab!



I ran yet another wire from the engine mount to the frame, mimicking the Stock grounding cable on the other side of the engine.

** zip tied fan connector **



There is an Empty Threaded Bolt hole in the frame right under the side tube on the air intake. I found a random bolt that fit the threads for this connection.

Connect here, or to your other grounding spot, Here...