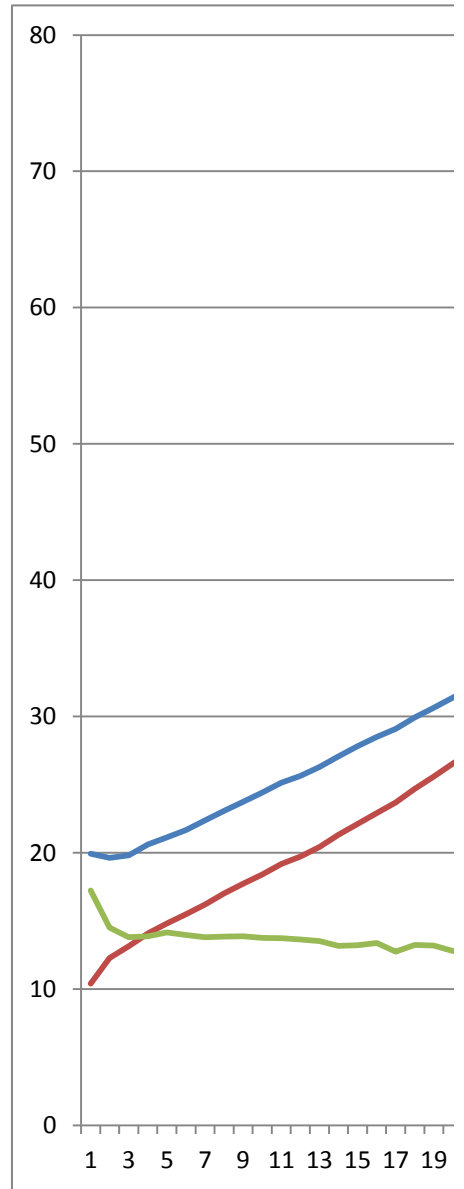


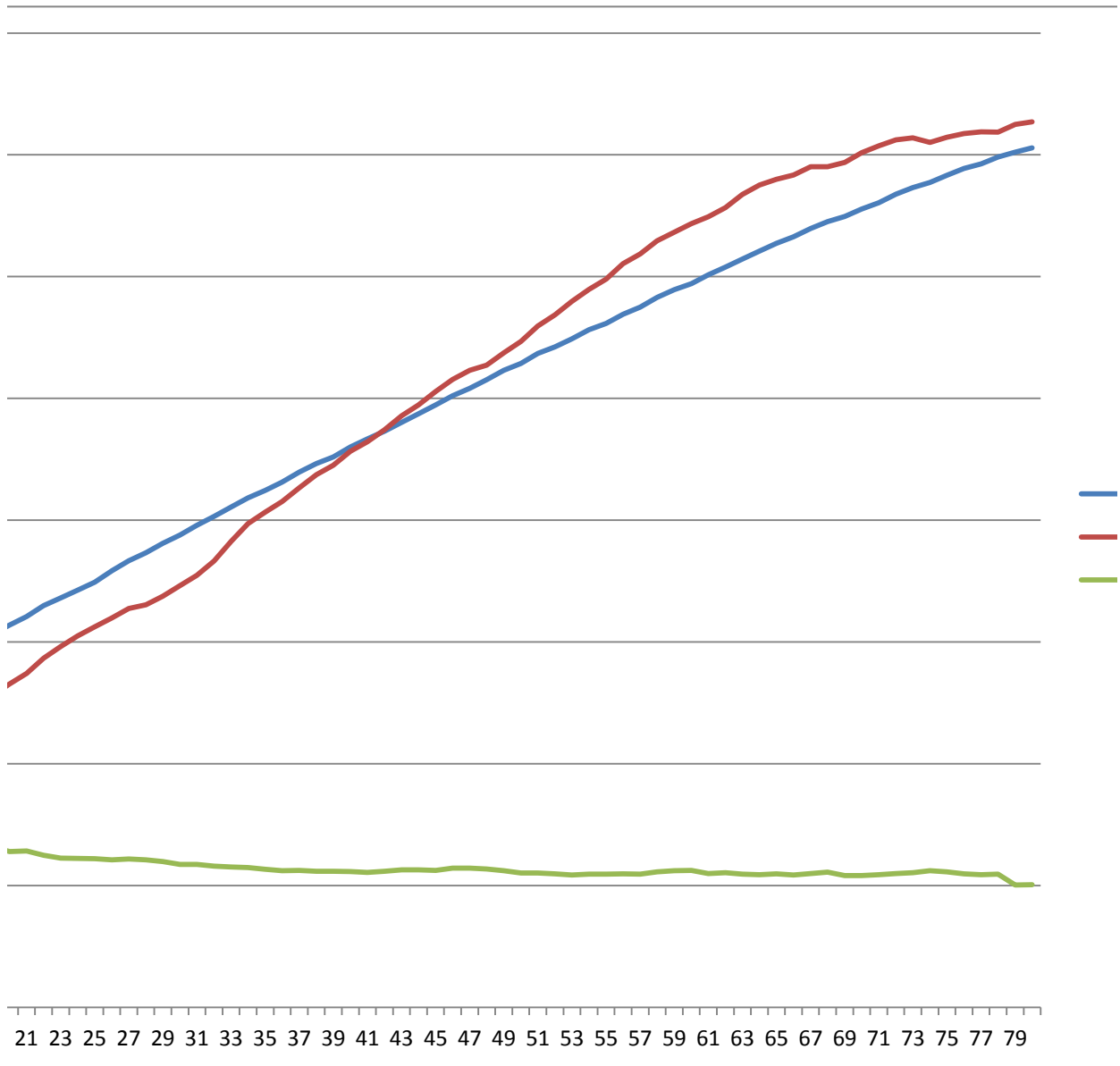
Target AFR for safe EGT below 930c running at high octane should be 12.5:1 AFR up to 4500rpm and enrich to 10.8@6800rpm

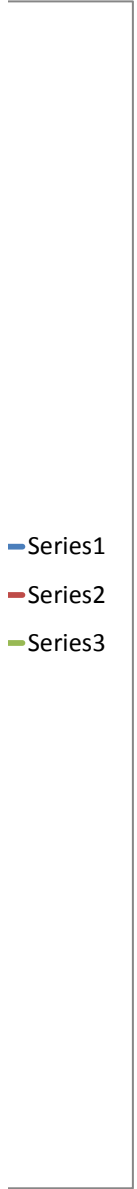
RPM	AirMasskg/h	LC1.AFR	AG Target AFR running at 91 octane
1994	104	17.2431	
1964	122.75	14.5089	
1983	131.5	13.818	
2062	141	13.8915	
2113	148.25	14.1708	
2168	155	13.9797	13.8768
2237	162.001	13.818	13.8768
2308	170.251	13.8621	13.8768
2373	177.251	13.8768	13.8768
2442	184.001	13.7739	13.7298
2514	191.751	13.7298	13.7298
2563	197.251	13.6563	13.7298
2629	204.251	13.524	13.7298
2707	213.251	13.1712	13.2006
2782	221.251	13.23	13.2006
2850	229.251	13.3917	13.2006
2910	237.001	12.7449	13.2006
2993	247.001	13.2447	13.2006
3065	256.001	13.2006	13.2006
3140	265.501	12.789	12.8478
3210	274.251	12.8478	12.8478
3300	286.751	12.495	12.5
3362	296.251	12.2598	12.5
3425	305.001	12.2304	12.5
3492	312.501	12.2157	12.3
3586	319.751	12.1275	12.3
3668	327.501	12.201	12.3
3733	330.501	12.1275	12.3
3810	337.751	11.9805	12.3
3879	346.251	11.7453	12.3
3958	354.751	11.7453	12.3
4032	366.501	11.613	12.3
4109	382.751	11.5248	12.3
4184	397.251	11.4954	12.3
4245	406.751	11.3337	12.3
4312	415.251	11.2308	12.3
4396	426.501	11.2455	12.3
4466	437.501	11.172	12.3
4520	445.251	11.1867	12.3
4601	456.751	11.1573	11.8
4668	464.501	11.0838	11.8
4731	474.251	11.172	11.8
4804	485.751	11.2896	11.8

4874	494.752	11.3043	11.8
4947	505.752	11.2602	11.8
5022	515.502	11.4366	11.8
5084	523.002	11.4366	11.8
5153	527.252	11.3631	11.8
5230	537.502	11.2308	11.8
5287	546.752	11.0397	11.2
5370	559.502	11.0397	11.2
5424	568.752	10.9662	11.2
5490	579.752	10.878	11.2
5564	589.502	10.9515	11.2
5617	598.002	10.9515	11.2
5690	610.752	10.9662	11.2
5749	618.752	10.9515	11.2
5829	629.502	11.1426	11.2
5893	636.502	11.2308	11.2
5943	643.502	11.2455	11.2
6016	649.252	10.9956	11.2
6078	656.752	11.0544	11.2
6144	667.502	10.9368	11.2
6209	675.252	10.9074	11.2
6274	680.002	10.9662	11.2
6327	683.502	10.8633	11.2
6396	690.252	10.9956	11.2
6451	690.252	11.0985	11.2
6495	693.752	10.8339	11.2
6556	701.752	10.8339	11.2
6606	707.502	10.8927	11.2
6677	712.252	10.9956	10.99
6732	714.002	11.0691	10.99
6773	710.252	11.2308	10.99
6831	714.502	11.1279	10.99
6889	717.502	10.9662	10.99
6927	719.002	10.8927	10.8
6983	718.752	10.9515	10.8
7022	725.002	10.0548	10.8
7058	727.002	10.0695	10.8
7098	725.752	10.0254	10.8
7089	722.502	10.0842	
6962	196.501	17.1402	
7031	80.7503	27.2391	
6957	85.0003	127.758	
6949	86.0003	127.758	
6893	84.7503	127.758	



45.2 44.5251 11.1867





- Series1
- Series2
- Series3

