

Clutch Stop Installation



A pair of long needle nose pliers and wire cutters
We used the needle nose pliers to pull out the stock clutch stop



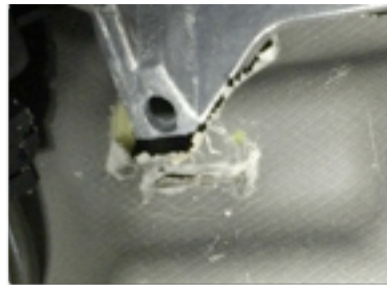
Using the wire cutters, we snipped off the end as it was a bit too long.



We needed the length of a 2.5 washers and this metal washer was perfect as an insertion between the rubber washers



1" in diameter metal washer



What the covering looked like prior to insertion of the new clutch stop



The old stop and our new one.
Such a huge difference!



2 rubber washers and a metal washer make the perfect distance. The clutch stop comes with 3 rubber washers, so we removed one and inserted the metal



The final product: Clutch stop installed and works like a charm!